

Learning for Life Fall 2013

OLLI is part of Duke University Continuing Studies

Kris Door, lecturer kristinedoor.com

North Carolina Museum of Art Lectures Wednesday 11:00-12:30

Understanding Modern and Contemporary Art

September 25: 1900-1940, the explosion of modern “isms”; Fauvism, Cubism, Expressionism, Futurism, The Bauhaus connection to Black Mountain NC





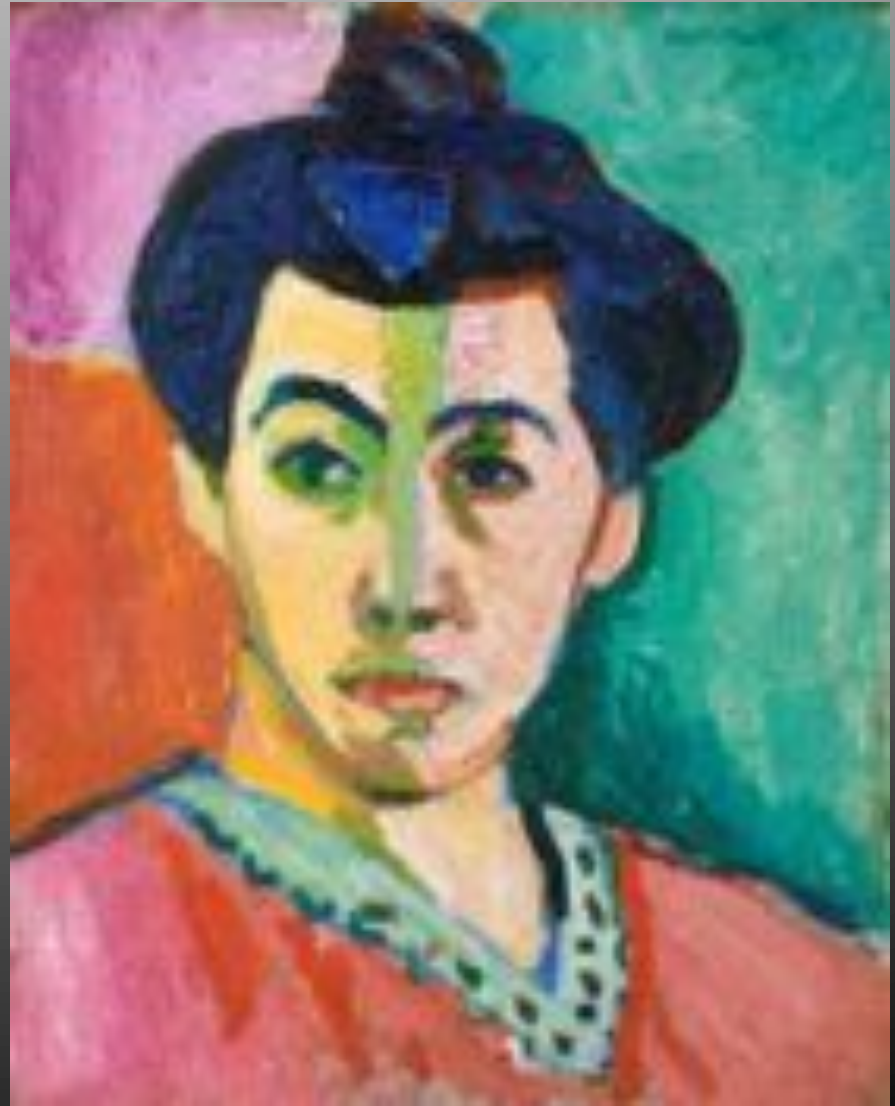
Henri Matisse, French
(1869-1954)
Self Portrait, 1900
Private Collection



Woman with a Hat
1905, San Francisco MOMA



Portrait of Madame Matisse.
(The green line), 1905
Copenhagen



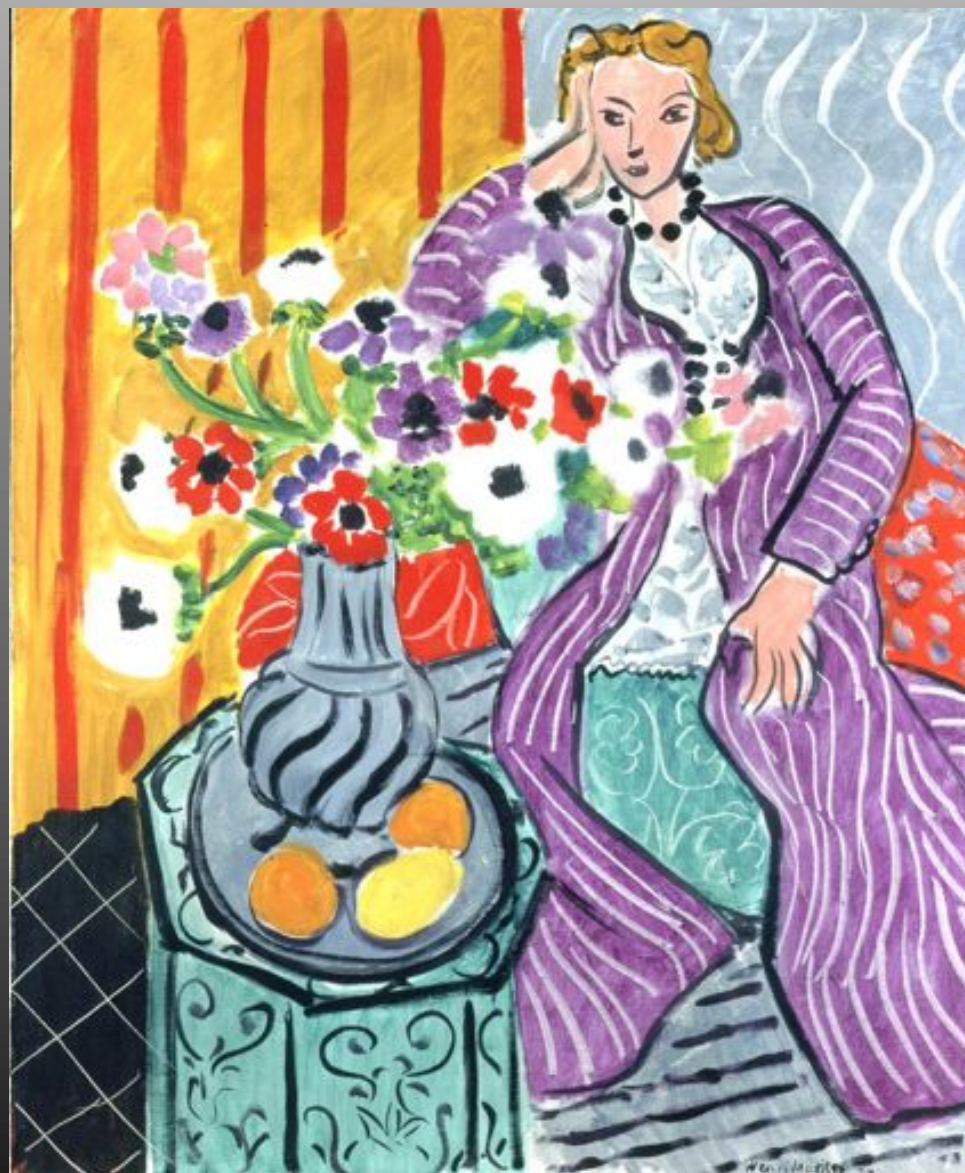
Goldfish and Sculpture, 1912, Oil on canvas MOMA



Large Reclining Nude, 1935 Baltimore Museum of Art, Baltimore



The Purple Robe and Anemones. 1937. The Baltimore Museum of Art



The Creole Dancer, 1950 Matisse Museum, Nice



Edvard Munch, Norwegian (1863-1944) *Jealousy*, 1907
Munch Museum, Oslo



The Scream, 1893

Oil, tempera, and
pastel on cardboard,

Nasjonalgalleriet,
Oslo



Virgin with the Dead Christ (Röttgen Pietà). Bonn GERMANY. circa 1300-25



Mathis (Grünwald), (born in Würzburg, 1475-1480), Isenheim Altarpiece, between 1512 and 1516, Musée Unterlinden, Colmar.

Die Brücke (The Bridge) (1905-13) Expressionist Art Group in Dresden

Ernst Ludwig Kirchner (1880–1938)

Karl Schmidt-Rottluff (1884–1976)

Erich Heckel (1883–1970),



MIT DEM GLAUBEN
AN ENTWICKLUNG
AN EINER NEUE GE-
NERATION DER SCHAFFEN-
DEN WIE DER GENIESSEN-
DEN RUFEN WIR ALLE JU-
GEND ZUSAMMEN UND
ALS JUGEND, DIE DIE ZU-
KUNFT TRÄGT, WOLLEN
WIR UNS ARM UND LEI-
BENSFREIHEIT VERSCHAF-
FEN GEGENÜBER DEN
WOHLANGESESSenen AL-
TEREN KRÄFTEN. DER GE-
HÖRT ZU UNS, DER UN-
MITTELBAR UND UNVER-
FÄLSCHT DAS WIEDER-
GIEBT, WAS IHM ZUM
SCHAFFEN DREHGT

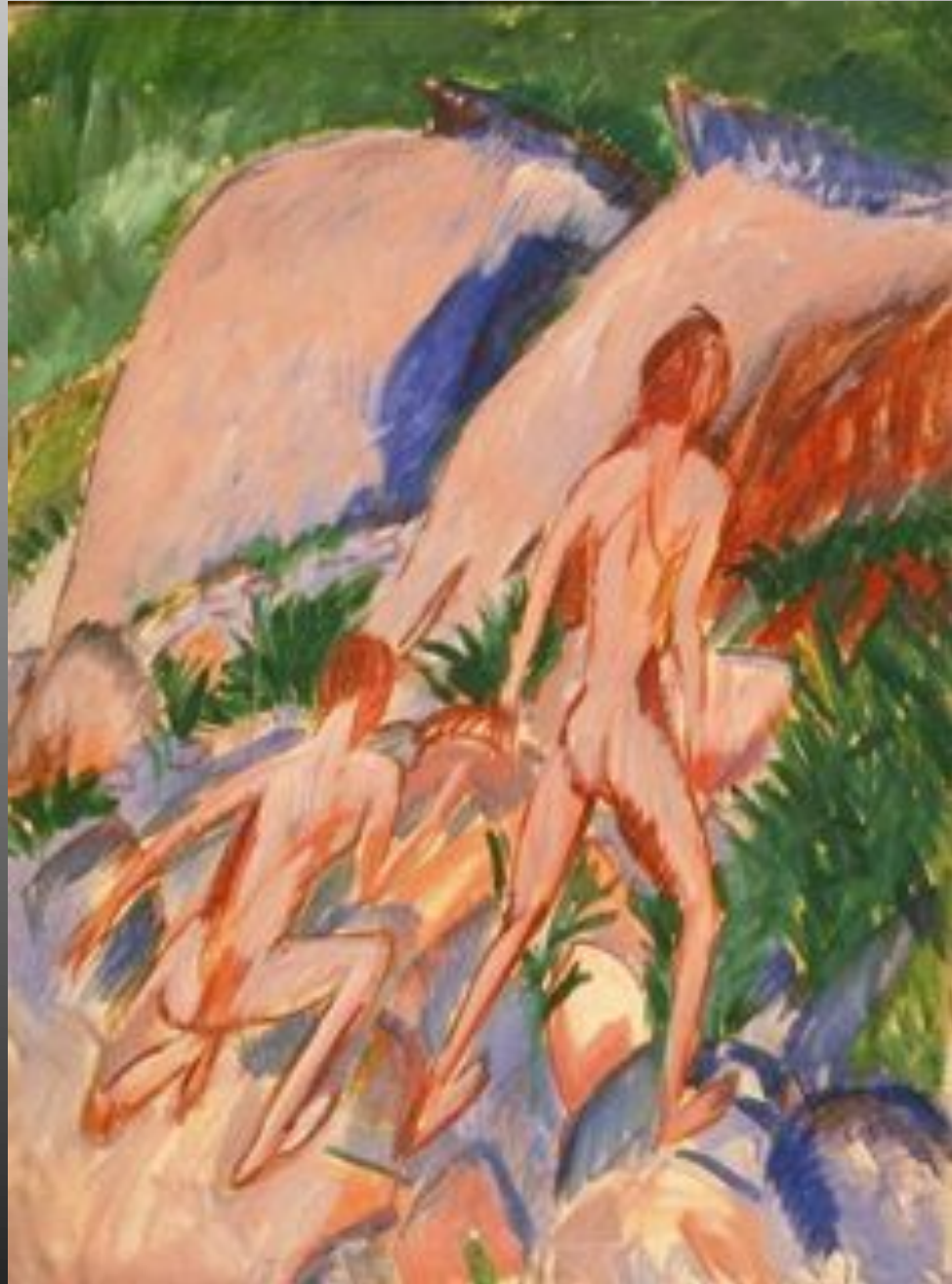
Ernst Ludwig Kirchner, German, (1880–1938) *Dresden Street*, 1908 (reworked 1919; dated on painting 1907) MOMA



Panama Dancers, 1910-11 NCMA



*Two Nude Figures in a
Landscape, 1913*
NCMA



Young Shepherd with Flower, 1918 NCMA



Adolf Hitler and Adolf Ziegler visit the *Degenerate Art* exhibition, Munich 1937.



Karl Schmidt-Rottluff (1884-1976) *Portrait of Emy*, 1919 NCMA



***Still Life, c. 1922* NCMA**



Erich Heckel, German, 1883-1970

***The Tiergarten in Autumn, Berlin, 1920* NCMA**



Cover of *Der Blaue Reiter* almanac, c.1912



Vasily Kandinsky, Russian, (1866- 1944) *Group in Crinolines*, 1909
Oil on canvas, Solomon R. Guggenheim Museum



Improvisation No. 12, Munich



Improvisation 28 (second version) 1912 Oil on canvas Guggenheim Museum





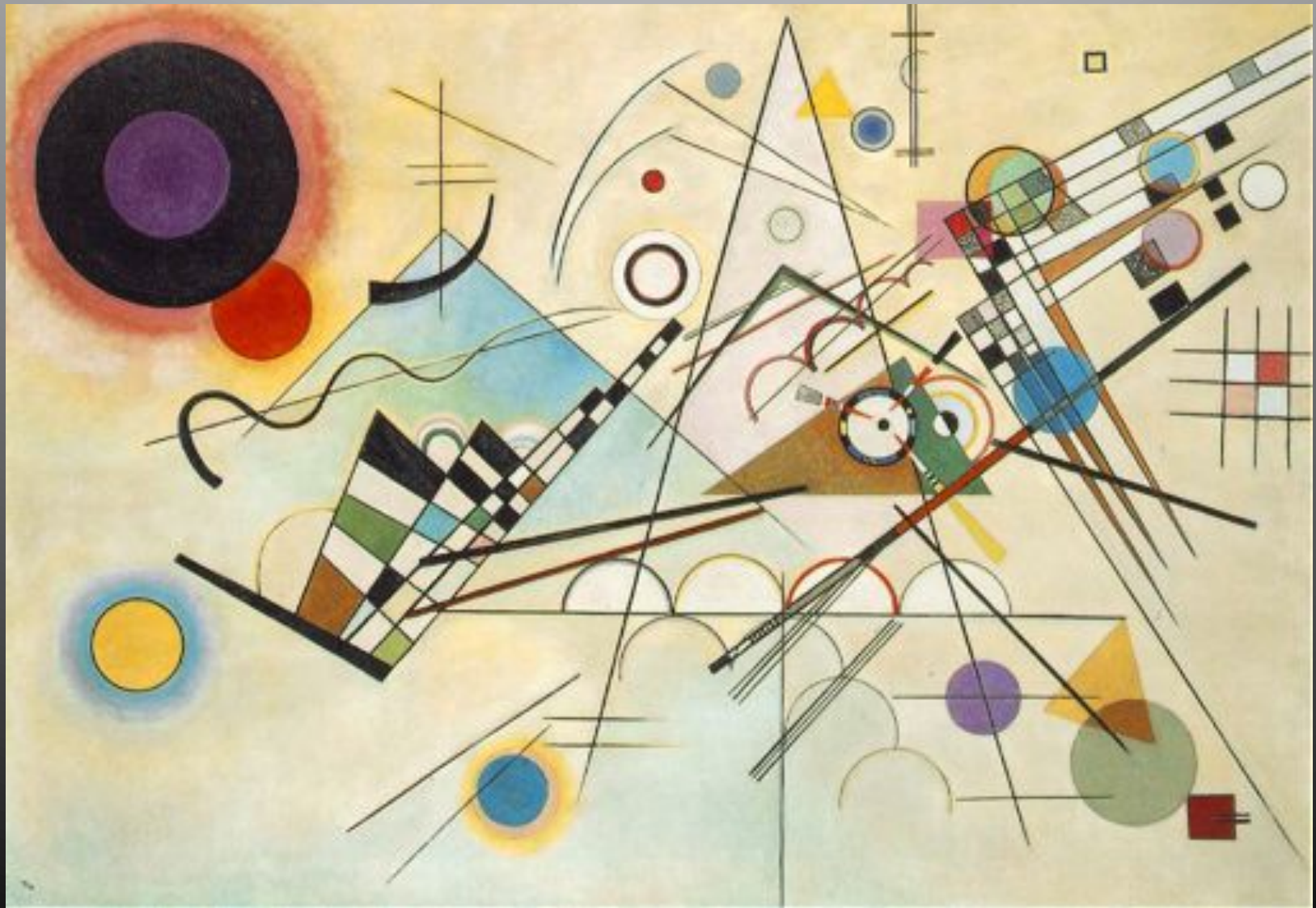
Improvisations in situ Museum of Modern Art, NY



Black Lines, December, 1913. Oil on canvas, Guggenheim Museum



Composition VIII, 1923, Oil on canvas, Guggenheim Museum



Kazimir Malevich, Russian (1879-1935) *Suprematist Composition*, 1916



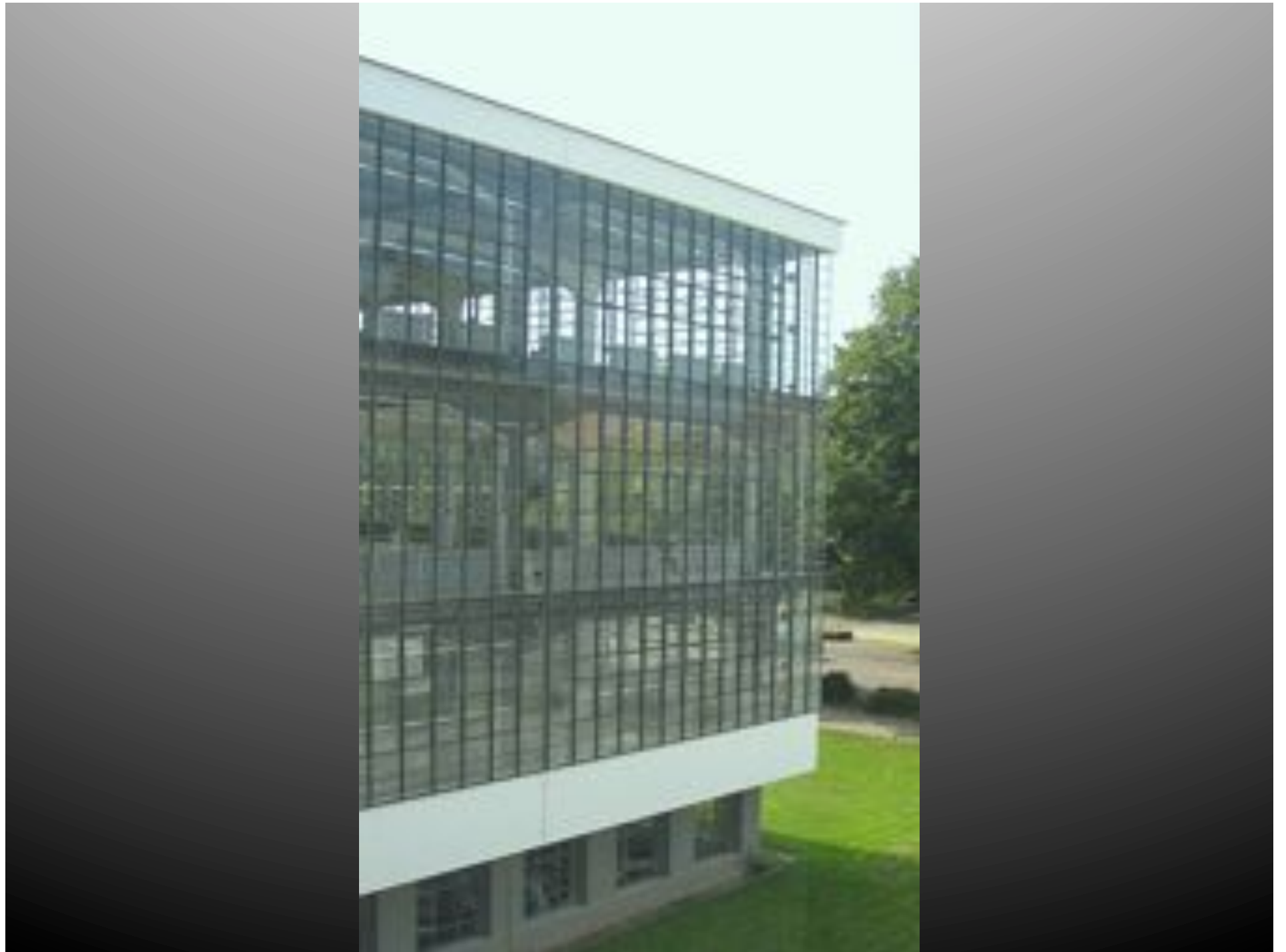
Suprematist Composition: White on White, 1918 MOMA









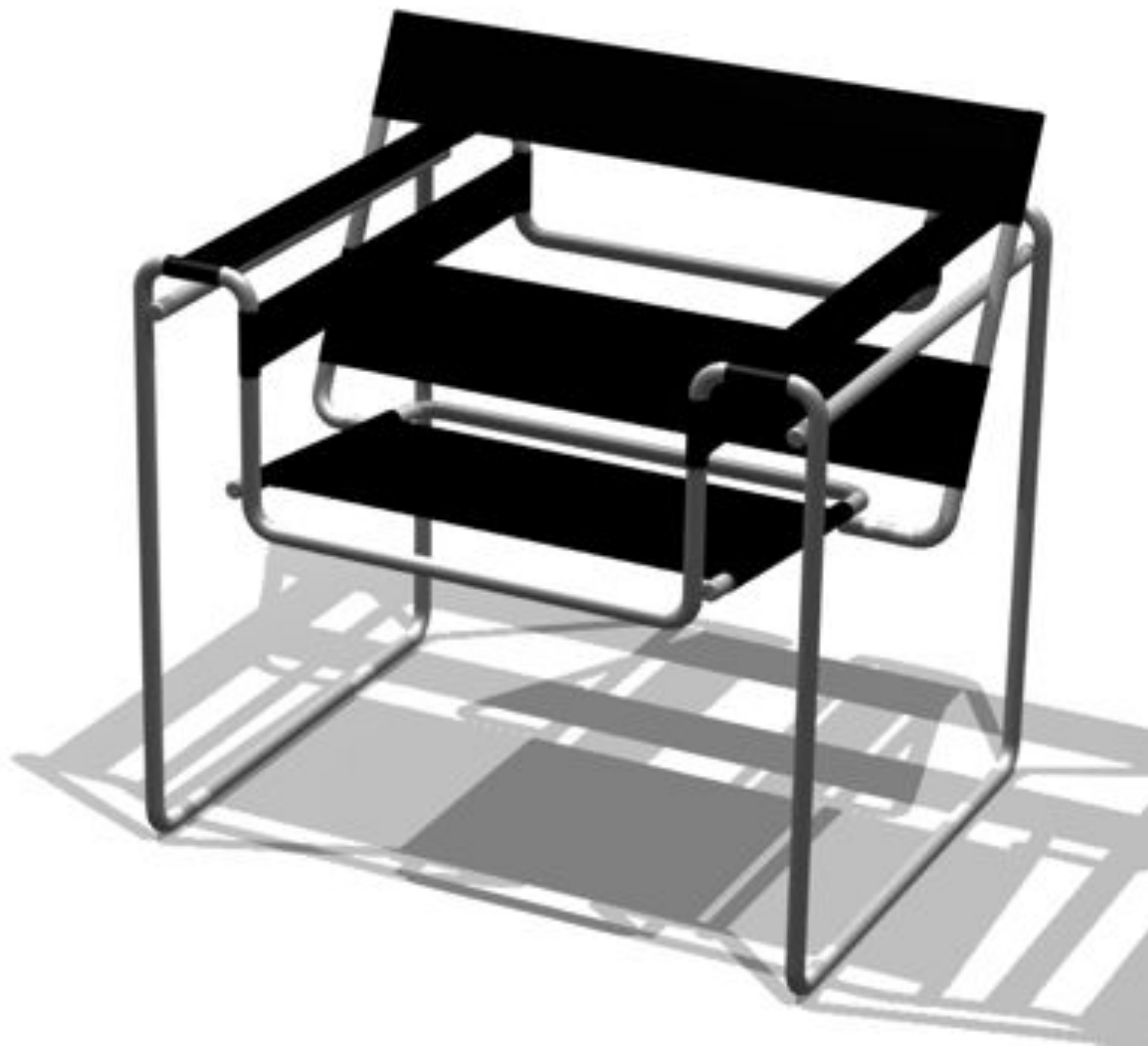




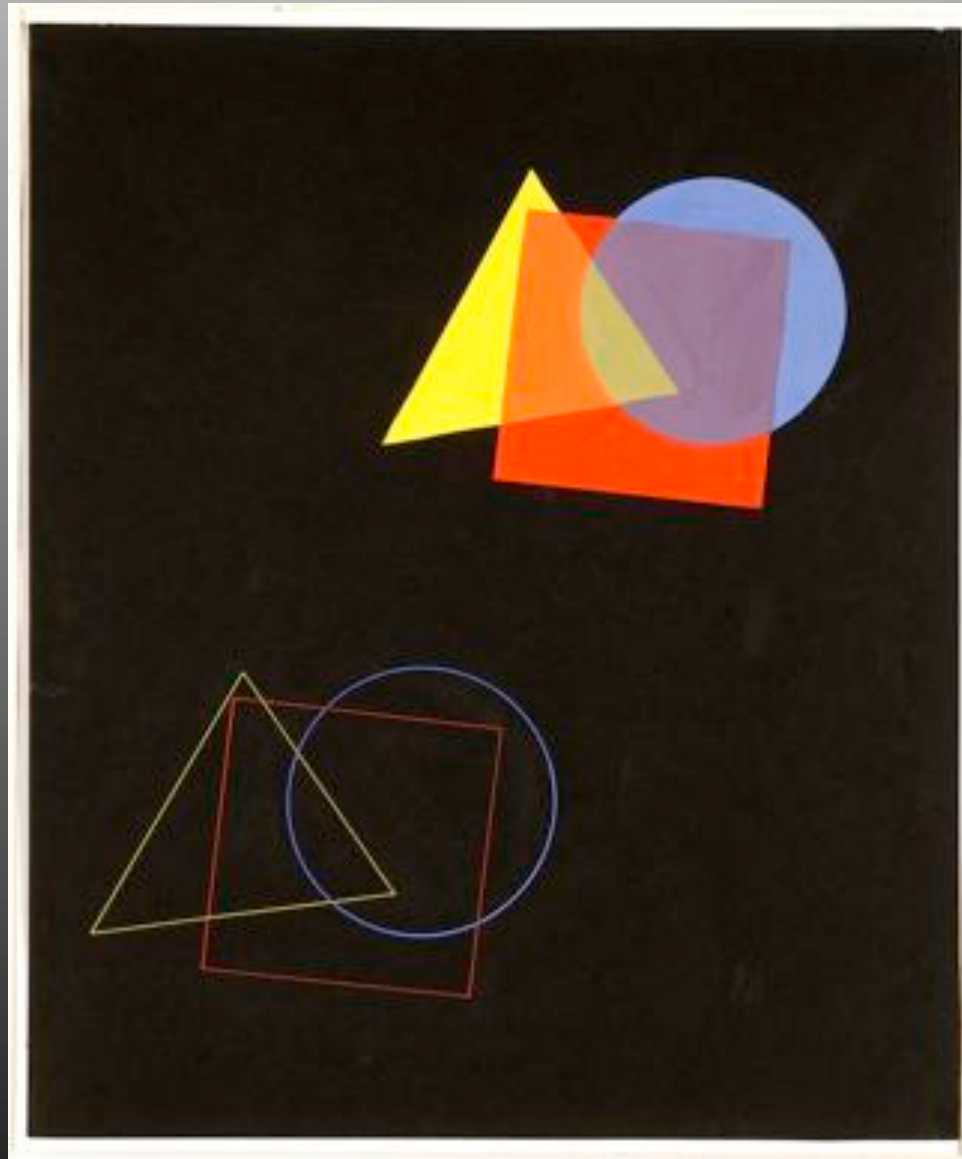
1. Form Follows Function







2. There is Always a Connection Between Color and Shape



3. Clean, Powerful Typography Matters

Joost Schmidt,
Weimar, 1923,
lithograph



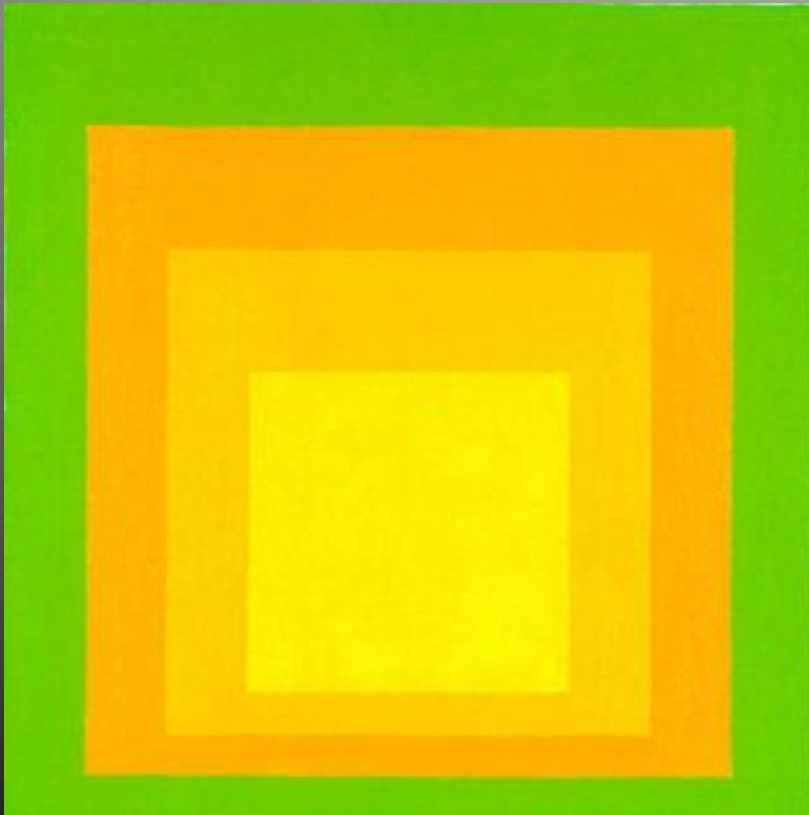
4. Share and Collaborate



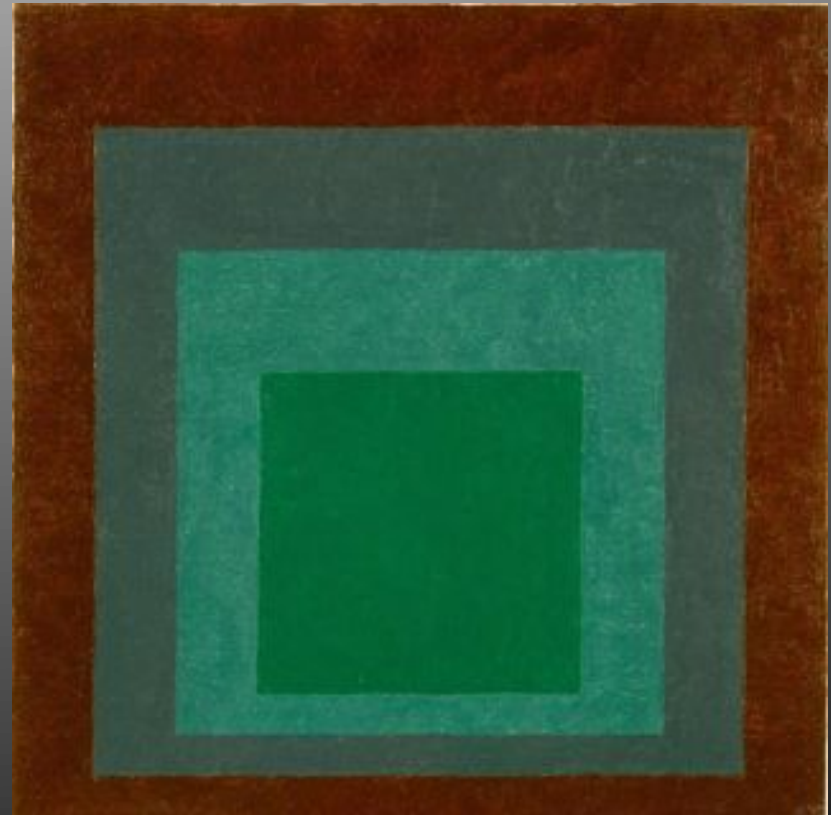
Josef Albers, Hinnerk Scheper, Georg Muche, László Moholy-Nagy, Herbert Bayer, Joost Schmidt, Walter Gropius, Marcel Breuer, Wassily Kandinsky, Paul Klee, Lyonel Feininger, Gunta Stölzl, Oskar Schlemmer (left to right).

Josef Albers, Germany, 1888-1976

***Homage to the Square:
"New Planting" 1956***



***Study for Homage to the Square:
"Veiled" Date: 1958***



Lyonel Feininger
(American) 1871-1956,
active in Germany
1887-1937

The Green Bridge, 1916



Robert Delaunay French, (1885–1941)

Champs de Mars: The Red Tower, 1911/23 Art Institute of Chicago



Robert Delaunay (1885–1941) *Simultaneous Contrasts: Sun and Moon*
1912-1913 oil on canvas MOMA



Stanton Macdonald-Wright American, (1890-1973)
Flight of the Butterfly No. 1, 1955



1896 Lumière brothers film of Fuller performing the dance



Marsden Hartley, American (1877-1943) *Indian Fantasy*, 1914





Pablo Picasso, Spanish (1881-1973)
Paintings of his mother and father from 1896. . .he was 15.



The Wait (Margot), 1901



Can-Can Dancer, 1901



*La Vie (1903),
Cleveland Museum of Art*



*1905, Family of Saltimbanques
National Gallery of Art*



Les Femmes d'Alger (O.K.). Oil on Canvas
Museum of Modern Art, New York 1935





African art filled Picasso's studio in 1908.



Portrait de Ambroise Vollard, 1910
Pushkin Museum of Fine Art
Moscow



Georges Braque,
Fruit Dish and Glass, 1912,
papier collé and charcoal on
paper.







Pablo Picasso. Still life with *Guitar*. *Variant state*. Paris, assembled before November 15, 1913.. Paperboard, paper, string, and painted wire installed with cut cardboard box, The Museum of Modern Art, New York.



Alexander Archipenko Ukrainian (1887-1964)
Blue Dancer, modeled 1913-1918;
cast after 1961
Bronze with blue patina, marble base **NCMA**



Standing Woman Combing Hair,
modeled 1915-cast late 1950s
Bronze, blue patina **NCMA**





Pablo Picasso, Bull (plates I - XI) 1945



***Guernica*, 1937 Reina Sofia Museum, Madrid**











Giacomo Balla, Dynamism of a Dog on a Leash, 1912,
Albright-Knox Art Gallery, Buffalo, New York



Giacomo Balla, *Abstract Speed + Sound* 1913-1914, Guggenheim



Piet Mondrian (Dutch, 1872–1944) Farm Setting with Tree and Irrigation Ditch, 1900-02 Oil on cardboard,



Piet Mondrian (Dutch, 1872–1944) *The Red Tree*, 1908-10
Gemeentemuseum, The Hague,



Gray Tree, 1911 Gemeentemuseum, The Hague, Netherlands





Flowering Apple tree, 1912, Oil on Canvas, cm. 78,5 x 107,5



Composition II, 1913, Oil on Canvas, cm 88 x 115

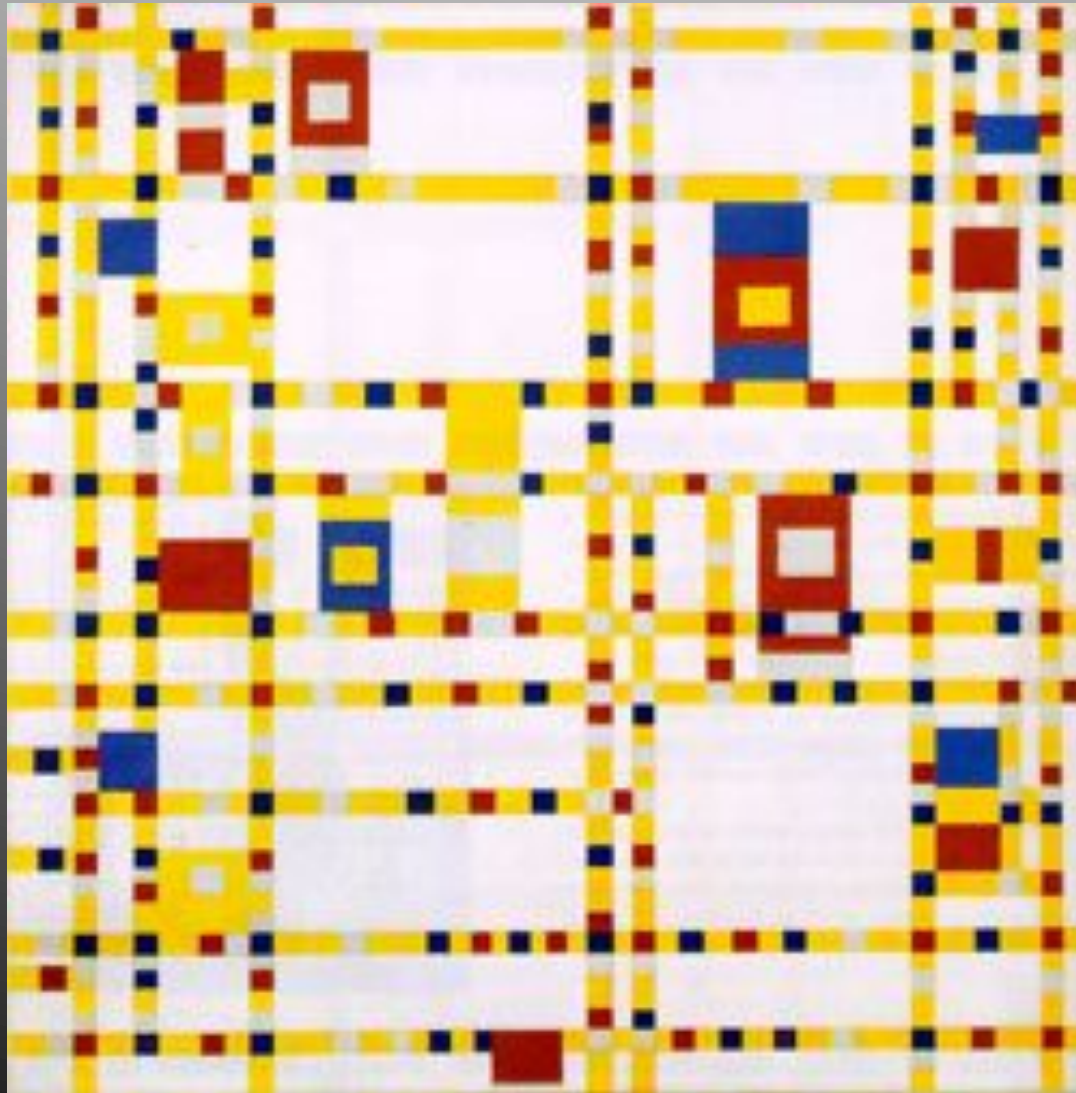


Composition in Oval with Color Planes 2, 1914, Oil on Canvas, cm. 84,5 x 113

Tableau 2, 1922. Oil on canvas, Solomon R. Guggenheim Museum,



Broadway Boogie Woogie, 1942-43, MOMA

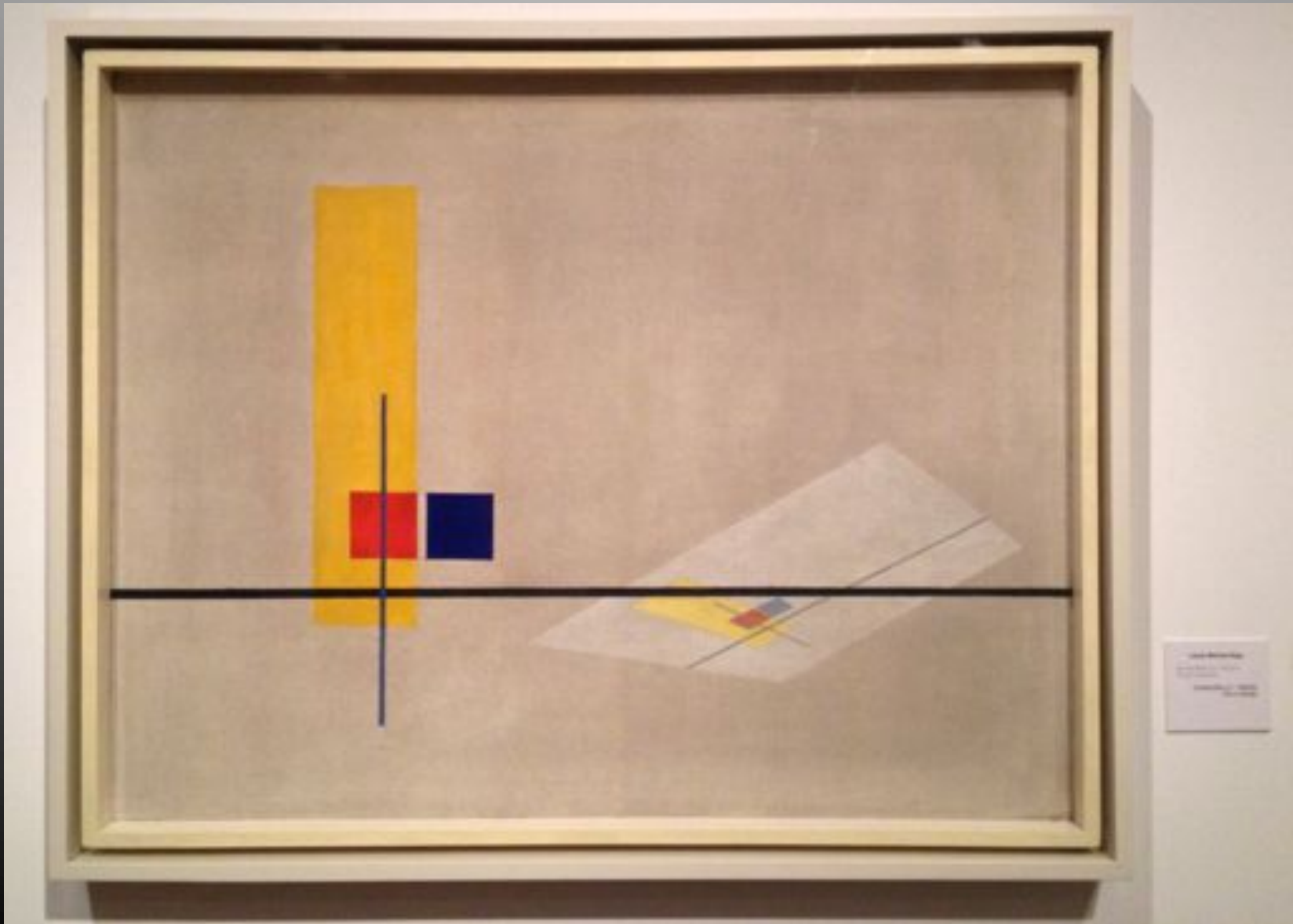








Laszlo Moholy-Nagy, *Construction*, 1922-23
Bauhaus-Archiv Museum of Design, Berlin



vision in motion

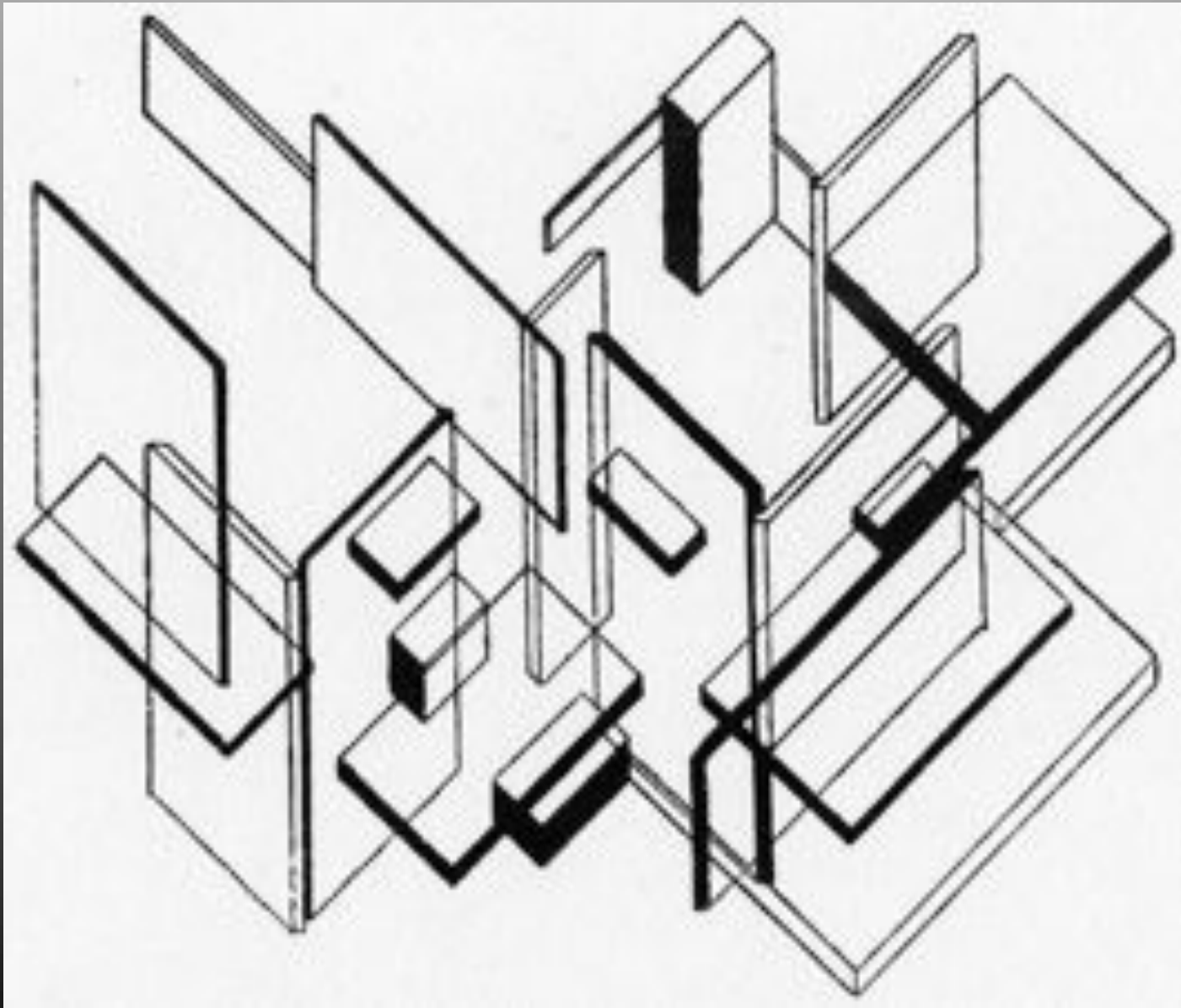
Theo van Doesburg (1876-1958) *Simultaneous Counter-Composition*,
1929-30, Oil on Canvas MOMA



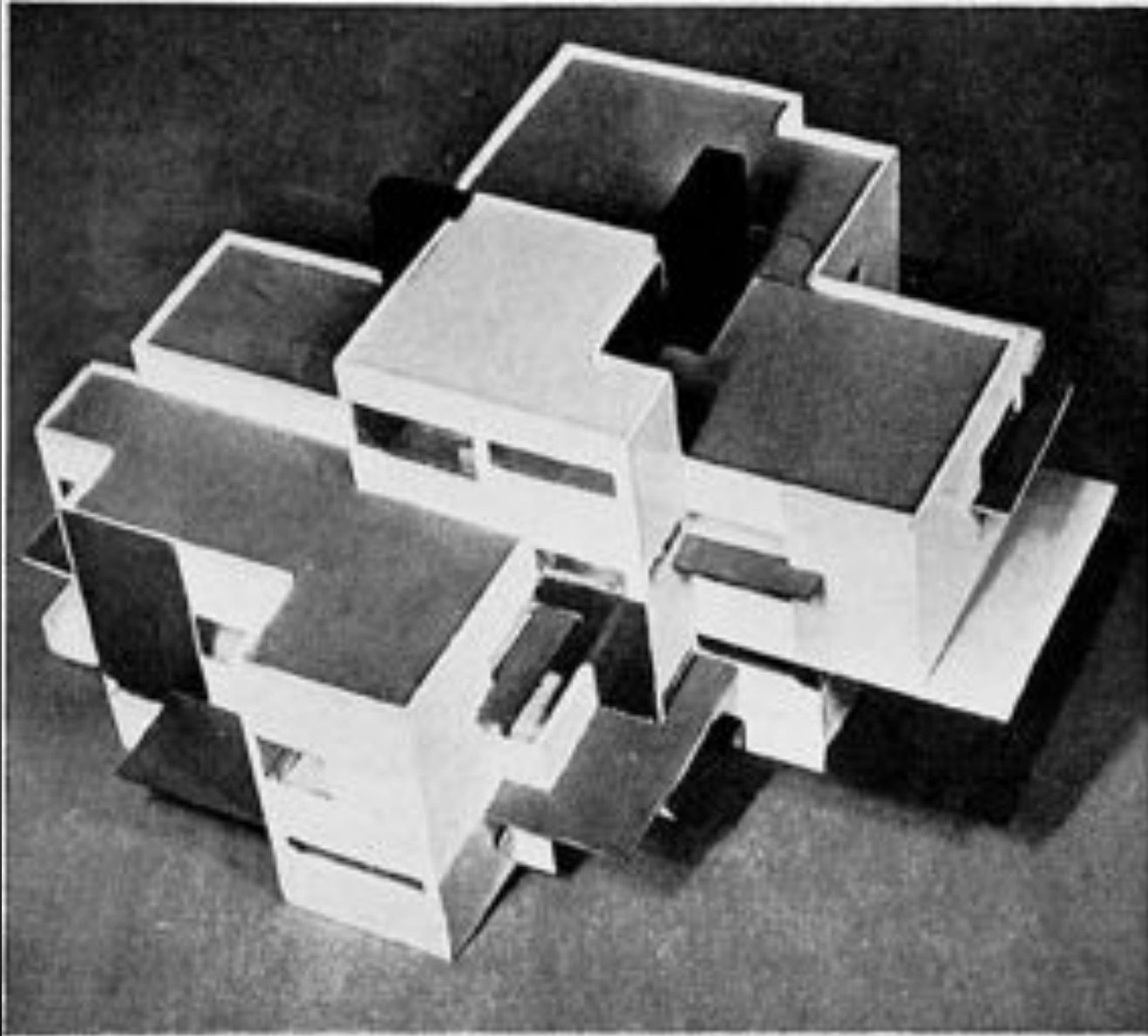
Theo van Doesburg, Contra-Construction Project, Axonometric
1923, MOMA



Architectural Analysis. 1923.



Maison Particulière. 1923





Walter Gropius house in Lincoln, Mass., 1938

IIT Crown Hall, 1956



Ludwig Mies van der Rohe, German (1886-1969)
Farnesworth House, Plano, Illinois 1946 to 1950





www.GreatBuildings.com