

Learning for Life Fall 2013

OLLI is part of Duke University Continuing Studies

**Kris Door, lecturer**      [kristinedoor.com](http://kristinedoor.com)

North Carolina Museum of Art Lectures Wednesday 11:00-12:30

## *Understanding Modern and Contemporary Art*

**November 13**

**Contemporary Art**

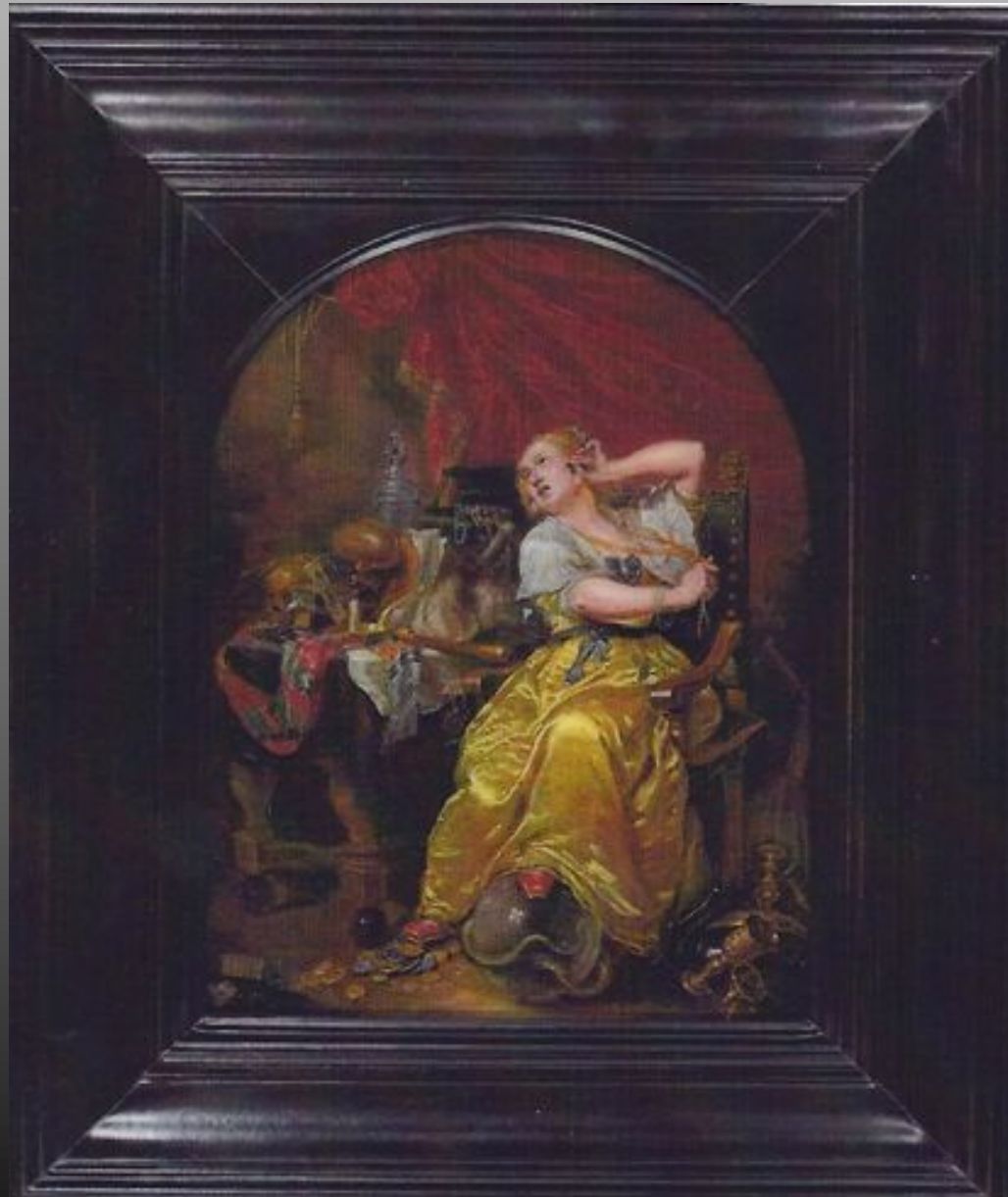


***SMALL TREASURES:  
Rembrandt, Vermeer, Van Dyck, and Their Contemporaries***

Organized by the North Carolina Museum of Art



Matthijs van den Bergh, Flemish (1615-87) *An Allegory of Vanity*, 1651







Golden Treasures of the Italian Early & High Renaissance  
and Small Treasures of Northern Painting OLLI 2014









1958 Philco Predicta (Brazil)



© 2003 TVhistory.TV





THE YELLOW CAPE COD



*Sarah Middleton Interiors*  
AFFORDABLE INTERIOR DESIGN FOR REAL PEOPLE





Anselm Kiefer (1945- ) *March Health*, 1974, Oil, acrylic, and shellac on burlap, Van Abbemuseum, Eindhoven, The Netherlands





*The Red Sea*, 1984-85, Oil, emulsion, and shellac on photograph, mounted on canvas, with woodcut and lead      Museum of Modern Art, New York





*Untitled*, 1980-86, Oil, acrylic, emulsion, shellac, lead, charcoal, and straw on photograph, mounted on canvas; with stones, lead, and steel cable; in three parts. NCMA



















Gerhard Richter  
German (1932- )

*Woman Descending the  
Staircase*, 1965

Art Institute of Chicago







*Two Candles*, 1982  
Oil on Canvas  
Art Institute of Chicago



*Skull and Candle*, 1983 Oil on canvas Private collection







*Station (577-2)*  
1985, Oil on canvas  
NCMA





Sean Scully, Irish-American (1945- )







Susan Rothenberg, American (1945- )





*Cabin Fever*, 1976 Acrylic and tempera on canvas, Fort Worth



Elizabeth Murray, American (1940-2007)  
*Pigeon*, 1991,  
Oil on canvas on laminated wood construction  
NCMA







Robert Smithson (1938-1973) *Spiral Jetty*, 1970 1,500 ft long, Salt Lake, Utah





Christo, Bulgarian (1935- ) and Jeanne-Claude, Moroccan (1935 – 2009)  
*Green Storefront*, 1964 Hirshhorn Museum DC

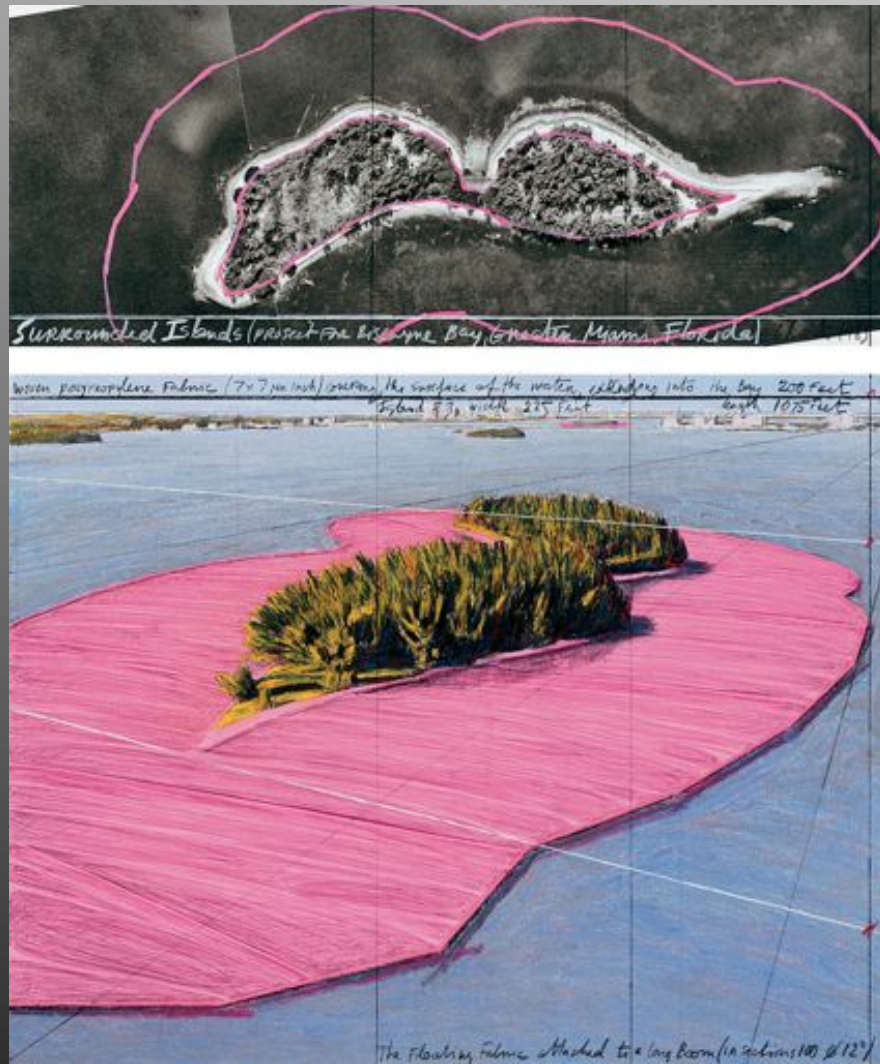


*Running Fence, 1972-76*























Shade, bark, length = 12 x 10 x 10 cm, 10 x 10 cm



Andy Goldsworthy a scene from *Rivers and Tides*, 2001



*Green Leaves, 2010*





Andy Goldsworthy, British, (1956- ) *Roof*, 2004-2005  
Buckingham Virginia slate National Gallery DC









Chris Drury, British,  
born Sri Lanka, 1948

*Cloud Chamber for the Trees  
and Sky*, 2003 NCMA







**Interior of the Treasury of Atreus is an impressive "tholos" beehive shaped tomb on the Panagitsa Hill at Mycenae, 1250 BCE**





Thomas Sayre, American (1950- ) *Gyre*, 1999 Three ellipses of concrete, colored with iron oxide, reinforced with steel, and mottled with dirt residue from earth casting NCMA Park









Patrick Dougherty, American (1945- ) *Trail Heads*,  
2005, maple and sweet gum saplings







*Out of the Box*, 2010, Installed in Iris Café, NCMA







**Jaume Plensa, Spanish, (1955- ) 'Crown Fountain,' 2004,  
Millennium Park, Chicago**











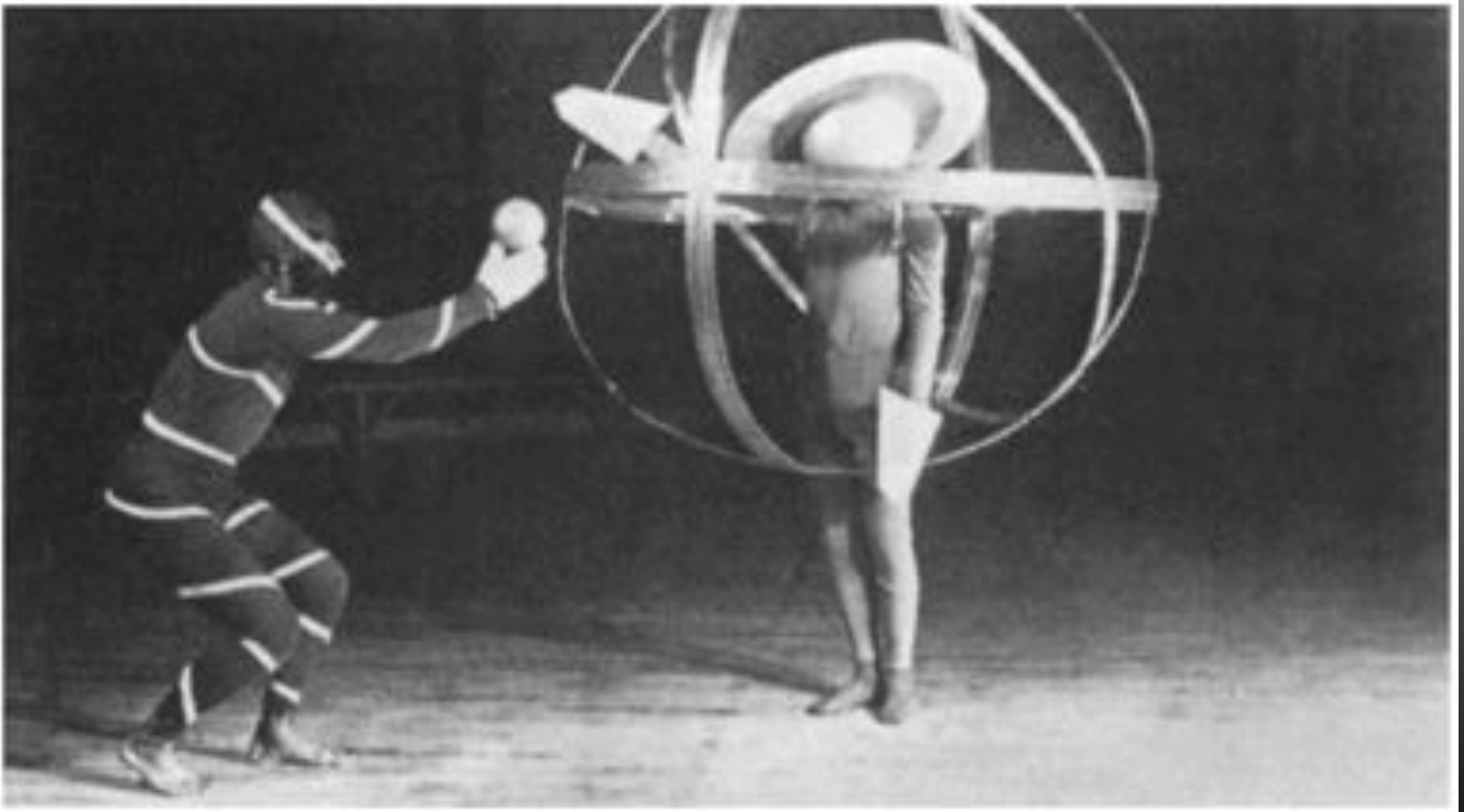
*Doors of Jerusalem I, II, & III, 2006 Resin, stainless steel, and light NCMA*

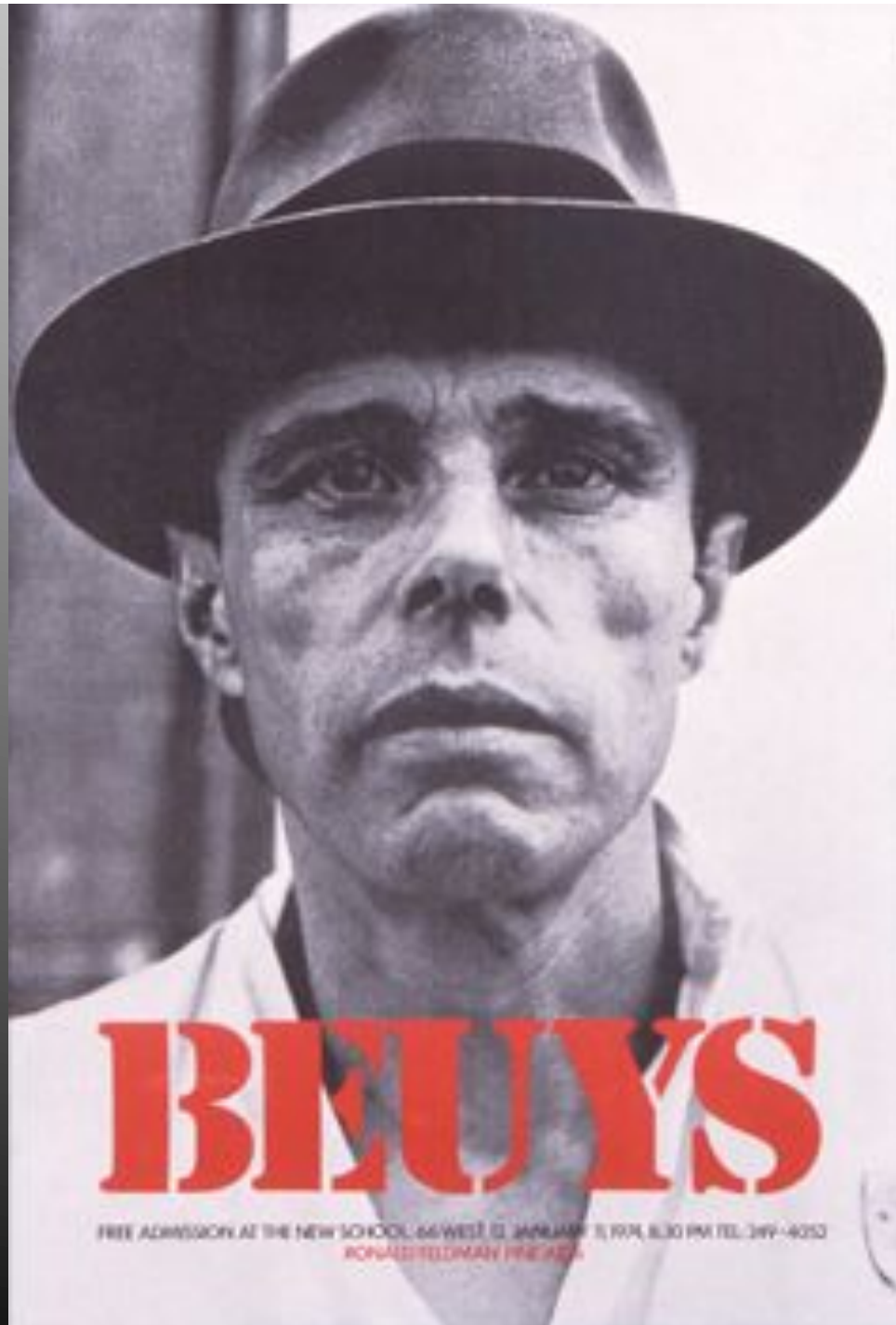






In 1952, John Cage staged his first "happening" at Black Mountain College





# BEUYS

FREE ADMISSION AT THE NEW SCHOOL, 66 WEST 12, JANUARY 8, 10PM, 8:30 PM TEL: 349-4053  
RONALD REEDMAN PRESENTS



Joseph Beuys, German (1921-1986) *I Like American & America Likes Me*, performance, René Black Gallery, NY May, 1974

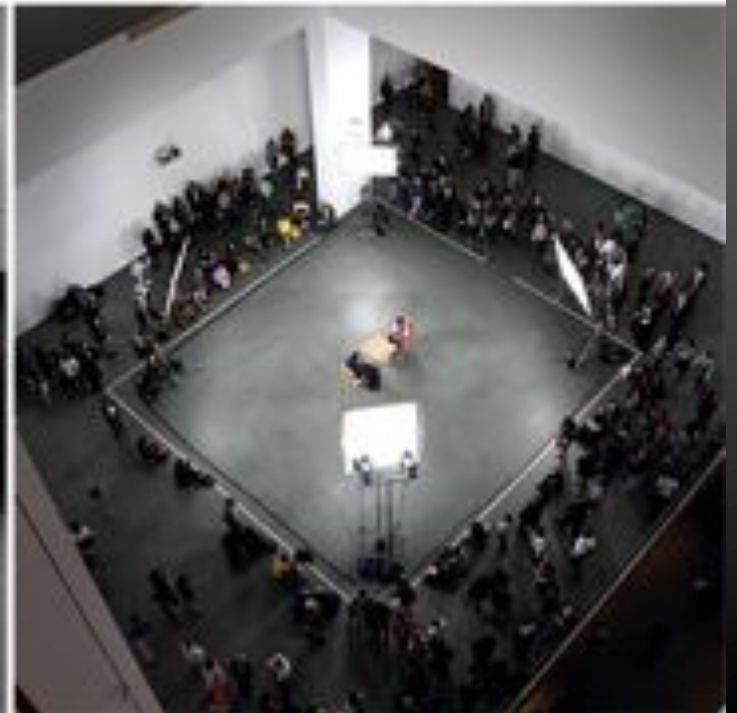






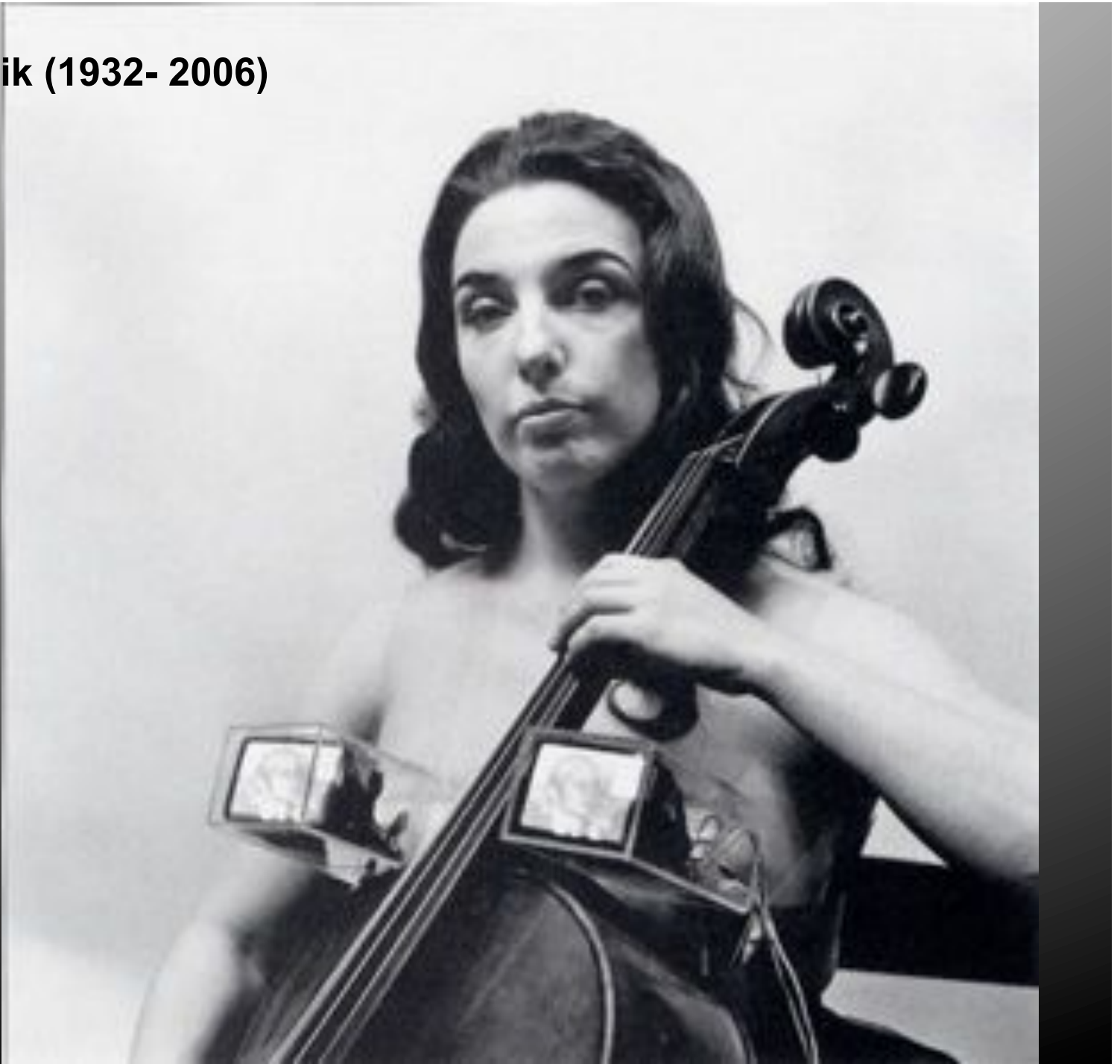
Marina Abramović, Yugoslavia (1946- ) *The Artist is Present*,  
March 14 to May 31, 2010, the Museum of Modern Art



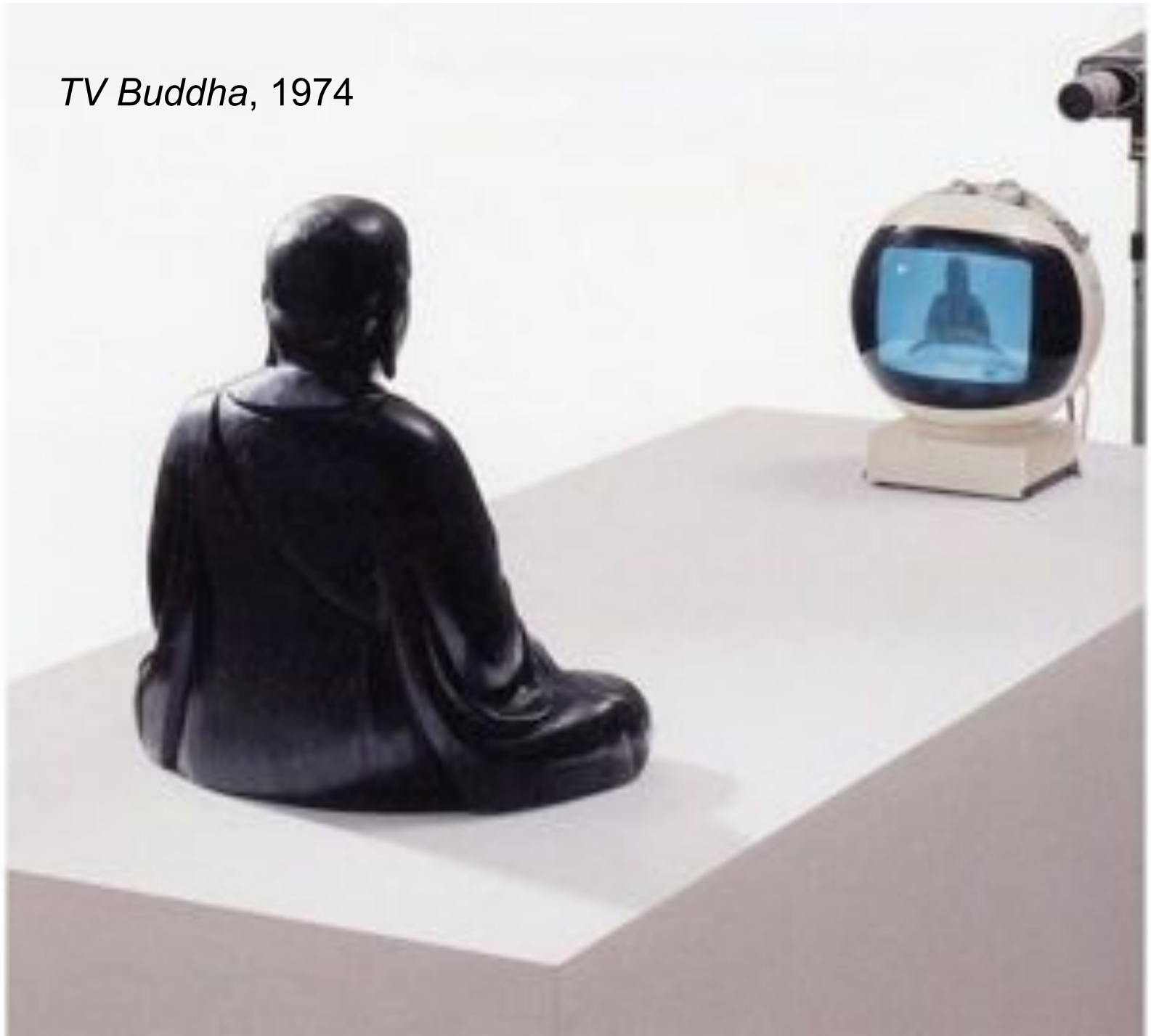




**Nam June Paik (1932- 2006)**  
**TV Bra, 1969**



*TV Buddha, 1974*





Electronic Superhighway: Continental U.S., Alaska, Hawaii 1995-96. It is exhibited at the Smithsonian American Art Museum



Bill Viola (1951- ),  
*The Crossing*, 1996  
large screen  
video installation







Bill Viola, American (1951- ) *The Quintet of Remembrance*, 2000  
Color video single-channel rear projection





Immigration



Immigration  
The Immigration and Naturalization Service (INS) is a federal agency responsible for enforcing U.S. immigration laws. It is part of the Department of Homeland Security. The INS is responsible for processing visas, inspecting immigrants at ports of entry, and enforcing immigration laws. It also has a role in the removal of immigrants who are inadmissible or who have violated the law. The INS is a large and complex organization with many different offices and functions. It is a key part of the U.S. government's efforts to manage immigration.





Jennifer Steinkamp, American, (1958- ), *Mike Kelly*, 2007-08  
Video installation, 8 min. loop



Joseph Kosuth (1945 -) *One & Three Chairs*, 1965 ,Whitney Museum



Barbara Kruger (1945- ) *Untitled (I Shop Therefore I am)*, 1987  
photo silk screen/vinyl





*Picture This, NCMA*

















Jenny Holzer (American, b.1950), inscribed in the marble top: FINDING  
EXTREME PLEASURE WILL MAKE YOU A BETTER PERSON IF YOU ARE  
CAREFUL ABOUT WHAT THRILLS YOU, white marble, De Sarthe Gallery






*Protect Me from What I Want*, Survival Series, 1985-85 Times Square



Installation view: *Jenny Holzer, Solomon R. Guggenheim Museum, New York, December 12, 1989–February 25, 1990.*



A large, multi-story building at night, illuminated by its own lights. The building has a classic architectural style with a central gabled section. A large sign is displayed on the front facade, consisting of a grid of small, glowing rectangular lights that form the text. The text is arranged in three lines: 'IF YOU HAVE MANY', 'DESIRES YOUR LIFE', and 'WILL BE INTERESTING'. The building's windows are also lit up, creating a warm glow against the dark sky.

IF YOU HAVE MANY  
DESIRES YOUR LIFE  
WILL BE INTERESTING

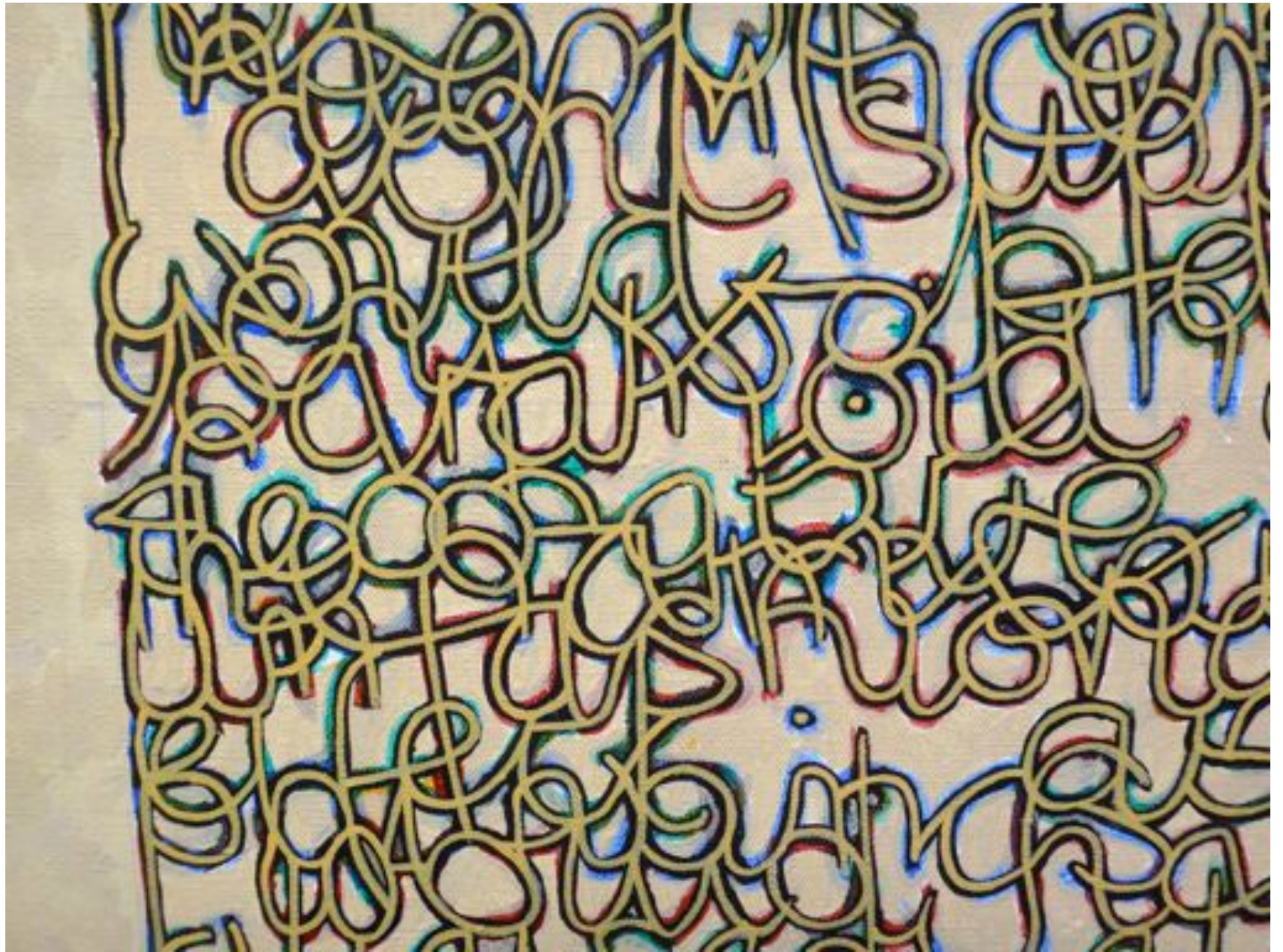
IF YOU LIVE SIMPLY



Tom Phillips, British (1937- ), *The Calligrapher Replies I*,  
1987 Oil on canvas NCMA









Guillermo Kuitca, Argentine (1961- ), *People on Fire*, 1993  
Acrylic and graphite on canvas















Daisy Youngblood American (1945- )  
*Mother and Child*, 1987  
Low-fire clay and wood NCMA







Ledelle Moe, South African (1971) *Congregation*, 2005-08 NCMA  
Concrete, recycled motor oil, and steel bar





## Collapse I



Alison Saar, American (1956- )  
*Tippy Toes*, 2007  
Wood and cast bronze  
NCMA











Aaron Douglas (1899-1979) *Three Illustrations of Black Magic*,  
1929 NCMA



Jacob Lawrence (1917-2000) *Forward*, 1967 NCMA





Romere Bearden (1912-1988) *New Orleans: Ragging Home*, 1974 NCMA



John Thomas Biggers (1924-2001) *Untitled*, 1994 NCMA







Hank Willis Thomas, American (1976- ), *The Cotton Bowl*, 2011  
digital chromogenic print NCMA





Cindy Sherman,  
American (1954- )  
*Untitled Film Still #13*, 1978



*Untitled #92, 1981*





Michael Richard's Tar Baby vs. St.  
Sebastian, 1999



Mickalene Thomas, American, (1971- ) *Three Graces: Les Trois Femmes Noires*, 2011 Rhinestone, acrylic paint, and oil enamel on wood panel NCMA















Kehinde Wiley, American  
(1977-)

*Judith and Holofernes, 2012,*  
*Oil on linen NCMA*





Giovanni Baglione,  
*Judith and the Head of Holofernes*  
(1608)







David Salle, American (1952- )

*The Emperor*, 2000 Oil and acrylic on canvas











El Anatsui, Ghanaian active in Nigeria (1944- ) *Lines that Link Humanity*, 2008  
Discarded aluminum and copper wire







Ed Ruscha, American, (1937- ) *Scratches on the Film*, 1993  
Acrylic on canvas NCMA

