

OLLI Fall 2012

***Portraiture, Landscape and Still Life
from Ancient Times to the Present***

Kristine Door, Ph.D., Lecturer kristinedoor.com
Thursdays 11:00-12:30

Judea Reform September 13: Portraiture





Portraiture, Landscape
& Still Life

People, Places & Things

FELIBIEN'S HIERARCHY (published 1669)

1. Monsters and Grotesques

Those things which have no equivalent in Nature; "fantastic fantasies" as one 17th-century theorist put it; man's imagination allowed to run uncontrolled, without the discipline of reason.

2. Things manufactured by man

That which is most commonplace and base, and deprived of life; inherently imperfect since subject to decay.

3. Still life objects: fruits, flowers, shells, etc.

That which is living, but deprived of any human value; representation of such matter is merely the mechanical exercise of imitating what the eye sees.

4. Landscapes

Man still not introduced; again, as with category 3, the simple mechanical recording of surface appearances of nature.

5. Genre scenes: representations of scenes from everyday life.

Man introduced for the first time; the possibility exists for movement and action; such actions, however, are of the most ordinary and base sort.

6. Portraits

Man unquestionably the center of interest; still not highest perfection in art, though, since figure is isolated and not engaged in noble human action involving numerous figures.

7. Groups of figures involved in a history or fable

Man's grand actions; allowed the painter to represent noble human character and high purpose ("history painting" was thought to include subjects drawn from 1) Biblical history 2) mythological history and 3) recorded history

8. Allegories of great virtue or great mysteries

Not easily distinguishable from category 7); the most grandiose of all types of painting, since meanings go beyond the mere narrative or action and convey profound human truths; mysteries of the Church (revealed truths), such as the Resurrection or the Eucharist, which cannot be grasped by reason and which must be accepted by faith, would be a part of category 8).



Coffin of Djed Mut
c. 715-525 B.C.E.
NCMA

Amenhotep IV (Akhenaton) Dynasty 18, 1352-1348 BCE

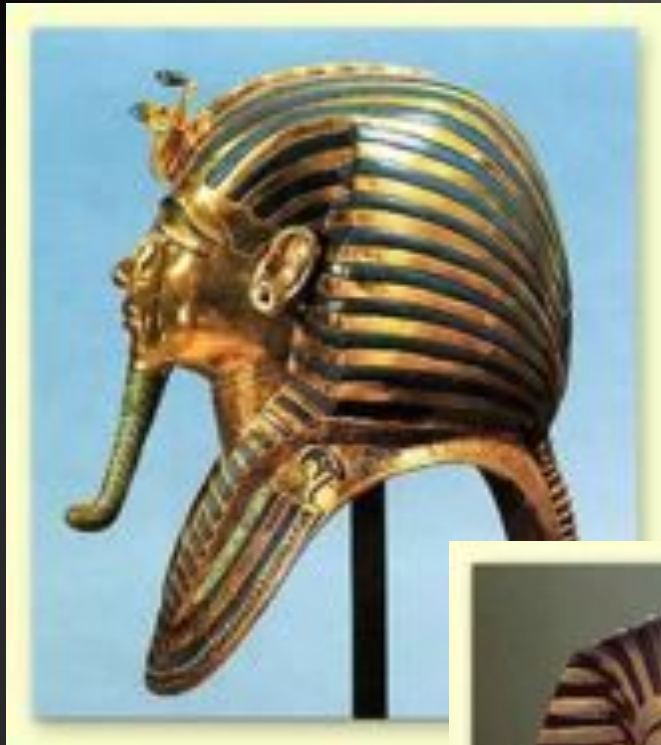
Sculpture, Cairo Museum,
Sunken Relief, Egyptian Museum, Berlin
Shabti Head, NCMA



Thutmose, Nefertiti, from Tell el-Amarna, Egypt, Dynasty 18, c. 1353-1355 BCE, Painted limestone. Egyptian Museum, Berlin







***Idealized Greek
Sculpture***

The Kritios boy

attributed to the sculptor
Kritios

c. 480 BCE

marble, 2'10"

Acropolis Museum

Athens (right)

Kouros figure (below)





Head of Bacchus
2nd Century
NCMA

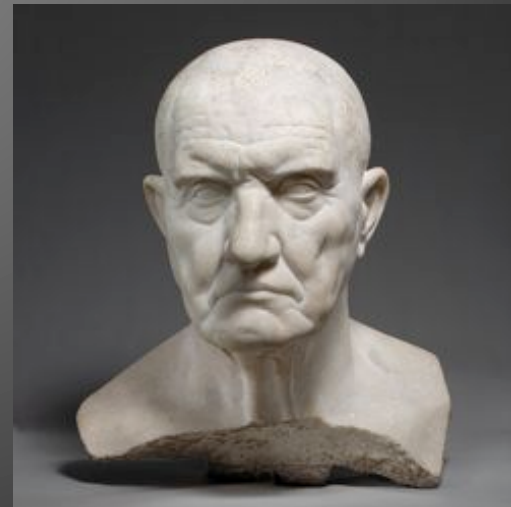
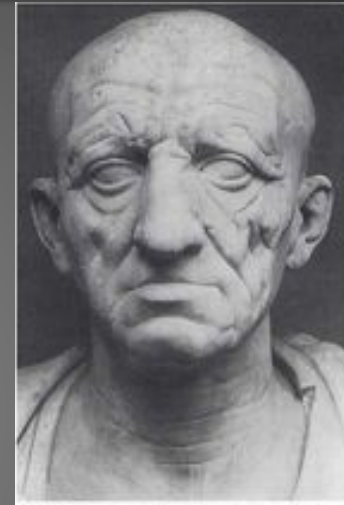
Busts of Romans, Capitoline Museums, Rome *verism*



**A Roman Patrician with
Busts of his Ancestors
1st century, marble, life size
Capitoline Museum, Rome**



**Portraits of a Romans
1st century BC, Rome**



Funerary Monument for Sextus Maelius Stabilio, Vesinia lucunda, and Sextus Maelius Faustus, 1st Century marble relief, NCMA



Portrait busts of Marcus Aurelius

Left: Capitoline Museum

Right: NCMA



Portrait of Emperor Caracalla
c. 217-230 Metropolitan Museum of Art



Caracalla in the Guise of Helios,
early 3rd Century, Marble NCMA



**Mummy portrait of a young man from Fayum
Roman Period, 3rd century NCMA**



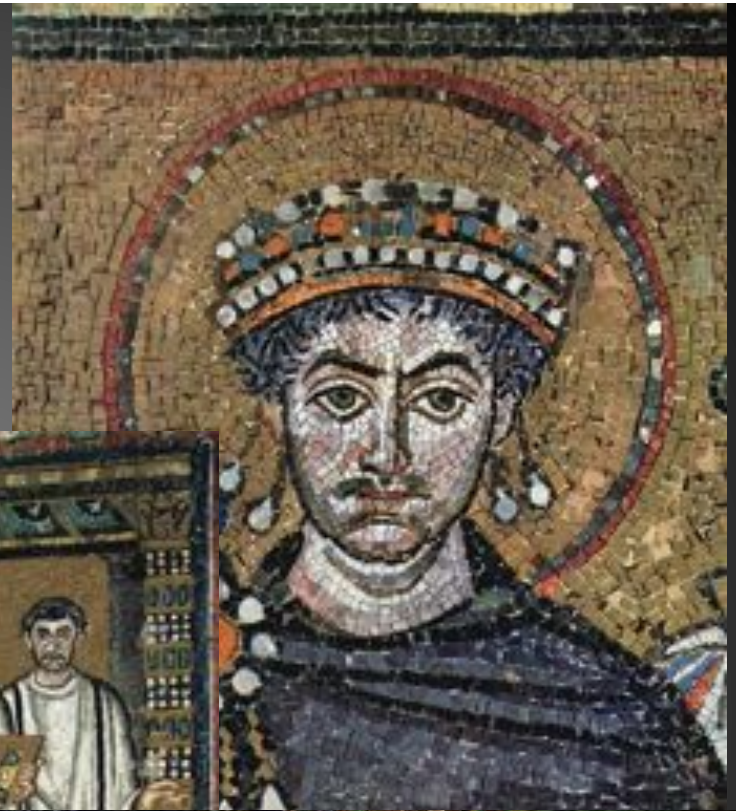
**Colossal body parts of Constantine, 313
courtyard of the Capitoline Museum, Rome**





**Funerary Stela of the Priest
Dionysios and His Wife, Tertia
c. 240-260 NCMA**

**Emperor Justinian and his retinue,
mosaic, San Vitale, 526-547,
Ravenna, Italy**



Richard II presented to the Virgin and Child by his Patron Saint John the Baptist and Saints Edward and Edmund
(The Wilton Diptych) c. 1395-9 National Gallery of Art, London



Robert Campin, *The Mérode Altarpiece*,
1425–28 Metropolitan Museum of Art, NYC







Master of the Latour d'Auvergne Triptych (French, active c.1490-1500)
The Annunciation with Saints and Donors, called the Latour d'Auvergne Triptych, c. 1497, Oil on panel, Gift of the Samuel H. Kress Foundation





The Virgin and Child with the Visitation

This painting is a reproduction of the original work by the Italian Renaissance painter Sandro Botticelli. It depicts the Virgin Mary seated on the left, holding the Christ Child on her lap. They are surrounded by a group of figures, including the Angel Gabriel, who is kneeling and holding a scroll. The scene is set in a room with a checkered floor and a large window in the background. The painting is displayed in a museum setting, with a white wall and a white pedestal in the foreground.



The Virgin and Child with the Visitation

This painting is a reproduction of the original work by the Italian Renaissance painter Sandro Botticelli. It depicts the Virgin Mary seated on the left, holding the Christ Child on her lap. They are surrounded by a group of figures, including the Angel Gabriel, who is kneeling and holding a scroll. The scene is set in a room with a checkered floor and a large window in the background. The painting is displayed in a museum setting, with a white wall and a white pedestal in the foreground.

Jan van Eyck

The Arnolfini Portrait, 1434

Oil on oak panel

National Gallery, London





Georg Pencz (German,
(c. 1500-1550)
Portrait of Martin Luther,
1533 (oil on panel)
NCMA



**Albrecht Dürer
(1471 1528)**

Self-Portrait, 1484
at 13 years old

British Museum



Self-Portrait at 22
1493, oil on linen,
Louvre, Paris



***Self-Portrait* ,1498**
oil on panel,
Prado, Madrid

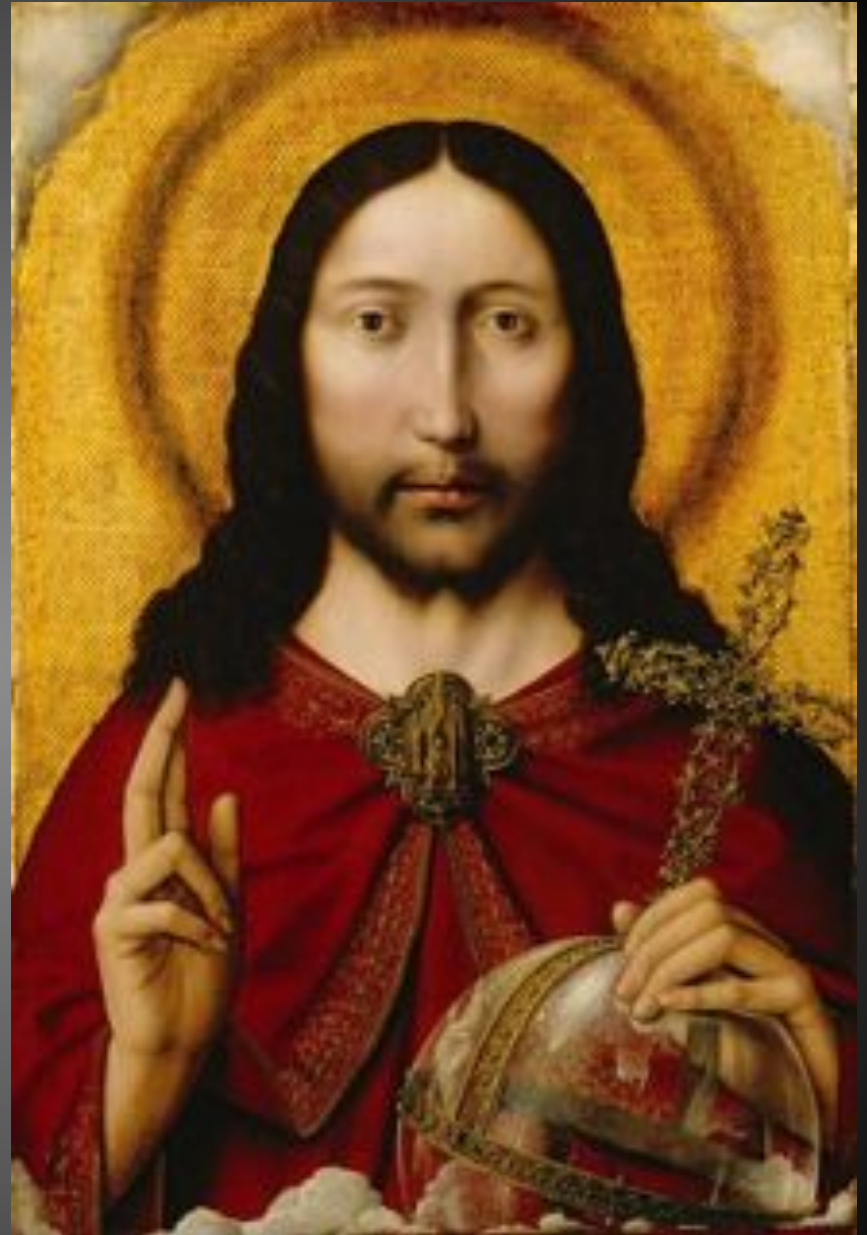


***Self-Portrait*, 1500**
oil on board,
Alte Pinakothek, Munich



Salvator Mundi

c. 1500-1510 Attributed to
Quentin Massys and Studio,
Netherlandish, 1465-1530
NCMA





Hans Holbein, German (c.1497-1543) *Double Portrait of Jean de Dinteville and Georges de Selve ("The Ambassadors")*, 1533. Oil and tempera on oak, National Gallery, London





Hans Holbein, Georg Giese, 1532, oak panel, Berlin,





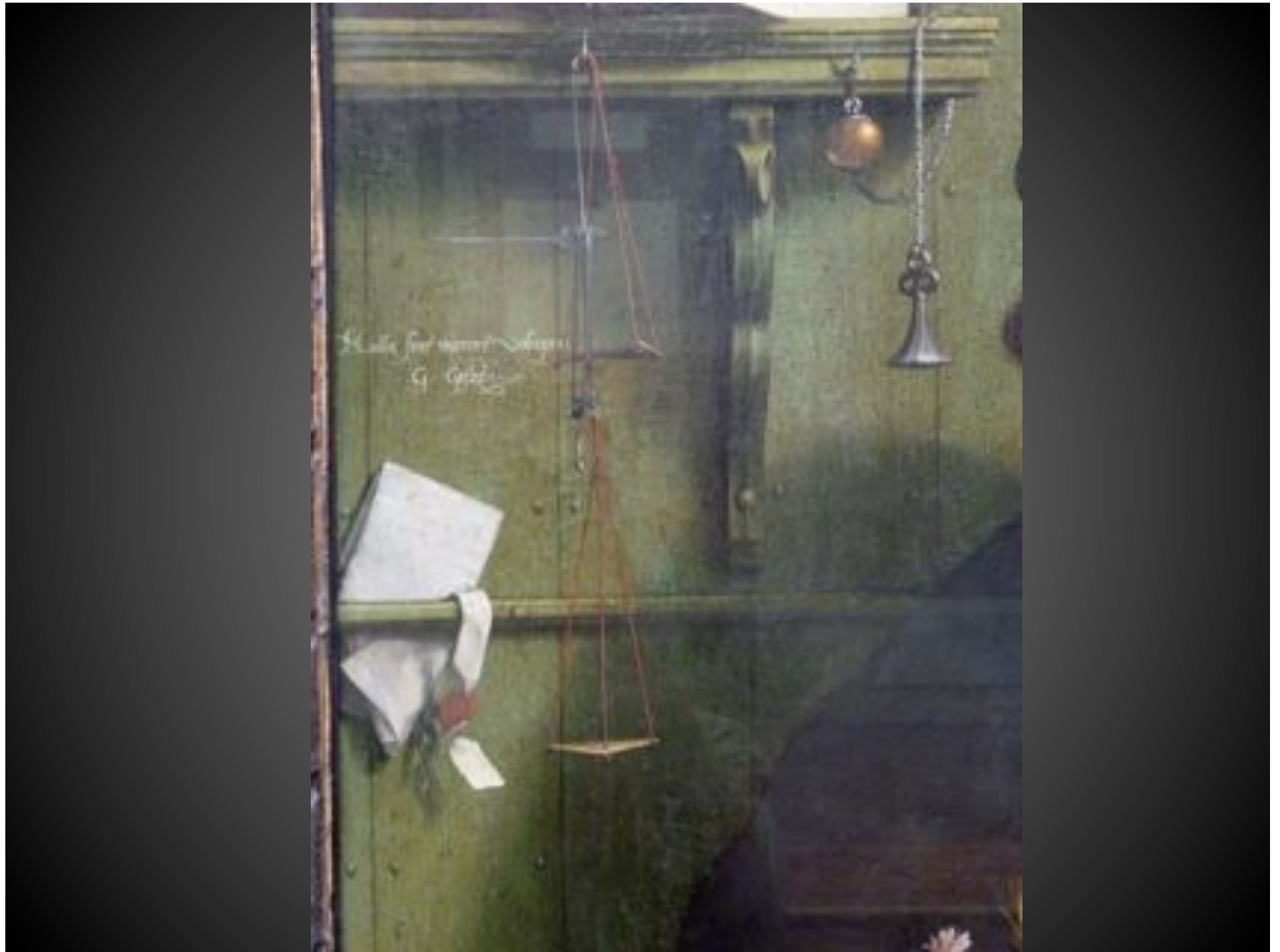




Disceat i p[ro]p[ri]e Georgi Ep[iscop]i
Ista, refert vultus, qua tenet Imago Georgi
Sic oculos viuos, sic habet ille Senas
p[ri]mo annus fuit xxxiiij
Anno Domini 1532









Antonis Mor, Netherlandish
c.1516/20-1575/77
Portrait of a Gentleman,
c. 1570 NCMA



LEFT Sandro Botticelli (1445-1510), *Portrait of a Young Woman*, 1480-1485
Tempera on wood, Stadelches Kunstinstitut, Frankfurt, German

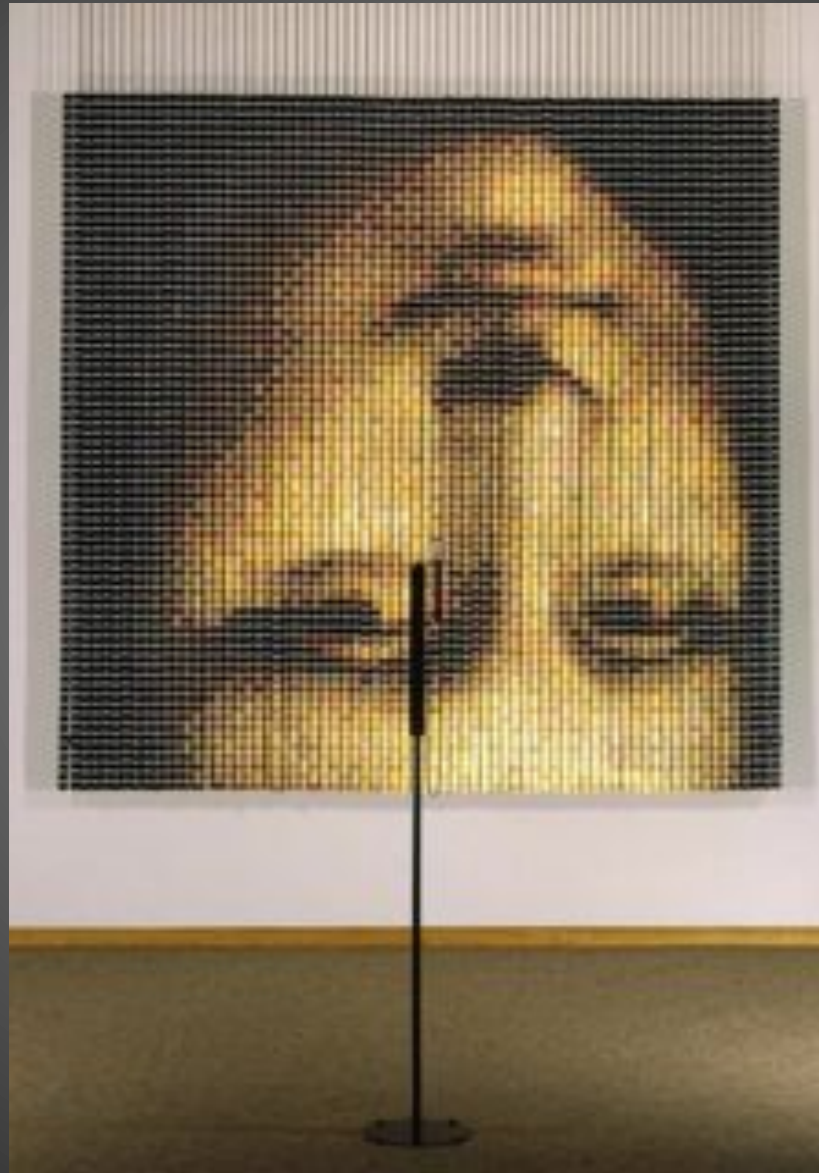
RIGHT Ghirlandio(1449-94) *Portrait of Giovanna Tornabuoni*, 1488,
Tempera on wood, Museo Thyssen-ornemisza, Madrid, Spain



Leonardo da Vinci, *Mona Lisa*,
c. 1503–1507, Oil on poplar
Louvre, Paris *sfumato*



Devorah Sperber (American) b. 1961 *After the Mona Lisa 2*, 2005



Giovanni Antonio Boltraffio (Italian,) c. 1466/7-1516
Portrait of a Youth Crowned with Flowers c. 1490



Raphael (1478-1529), *Portrait of Baldassare Castiglione*, c.1515 Louvre



Titian (1485-1576) *A Man with a Quilted Sleeve* c.1510
National Gallery, London



REMBRANDT, *Self Portrait at the Age of 34*, 1640 National Gallery, London



***Self Portrait as a Young Man* c. 1628** Rijksmuseum, Amsterdam (lft)

***Self Portrait as a Young Man*, 1629**

Staatsgemaldehysammlungen, Alte Pinakothek, Munich (rt)



Self-portrait in a cap, with eyes wide open,
etching and burin, 1630.





Metropolitan Museum, NYC
1660

***Self Portrait with Beret and Turned-Up Collar*, 1659**

National Gallery of Art, Washington (lft)

***Last Self Portrait*, 1669, Mauritshuis, The Hague (rt)**



Thomas de Keyser (1596/7–1667) *Portrait of Constantijn Huygens and his (?) Clerk* 1627 National Gallery, London



Portrait of a Gentleman, 1626 NCMA



The Militia Company of Captain Allaert Cloeck

1632, oil on canvas, Rijksmuseum, Amsterdam



Rembrandt, *The Night Watch*, 1642 Rijksmuseum





Syndics of the Cloth Guild, 1662. Rijksmuseum, Amsterdam











Circle of Rembrandt, Young Man with Sword, 1640-45



Anthony van Dyck (Flemish) 1599-1641, active in Britain
Lady Mary Villiers, later Duchess of Richmond and Lennox, with
Charles Hamilton, Lord Arran, about 1636 NCMA

Elizabethan Portrait 1596



Thomas Gainsborough (1727-1788)

Mr. and Mrs. Andrews, c. 1750 National Gallery, London



Blue Boy, 1770, Huntington Art Gallery, San Marino, CA



Thomas Gainsborough (British, 1727-88) *Ralph Bell*
c. 1772-74 Oil on canvas NCMA



Élisabeth-Louise Vigée-Le Brun
(1755-1842),
Self-Portrait in a Straw Hat, 1782
National Gallery, London



Marie-Antoinette with a Rose, 1783



Marie-Antoinette and her Children, 1789



Elisabeth Louise Vigée Le Brun, French,
Count Ivan Ivanovitch, c. 1795-97 NCMA



Jacques-Louis David (French) 1748-1825, *Self-portrait c. 1790-1818*



Sir Thomas Lawrence (British) 1769-1830, *Antonio Canova*, c. 1816-20





Carolus-Duran (French) 1838-1917, *Madame Carolus-Duran*, 1885



William Merritt Chase (American), The Artist's Daughter Alice, 1899



John Singer Sargent (American) 1856–1925 *The Daughters of Edward Darley Boit*, 1882







Van Gogh



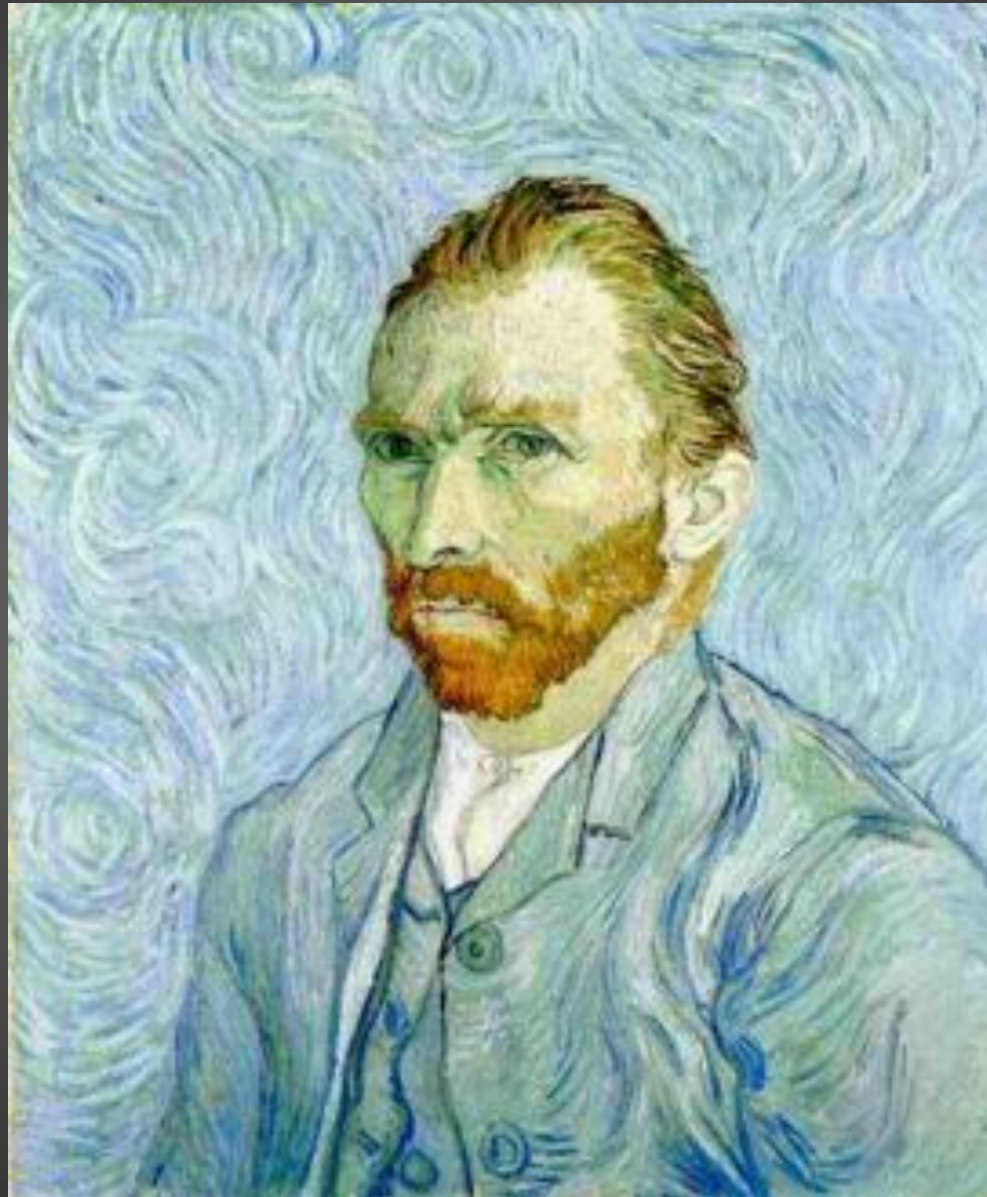
Cezanne



1887, Detroit Insitute



1889, Paris, Musée d'Orsay





Pablo Picasso, Spanish, French Cubism, *Woman in a hairnet*, 1938,
Collection of Julian and Josie Robertson
Karl Schmidt-Rottluff, German Expressionism, *Portrait of Emy*, 1919



Andy Warhol
American, 1928-1987
Marilyn, 1967



Liz, 1964-69



16 Jackies, 1964, acrylic on canvas
Walker Art Center, Minneapolis



Marilyns, High Museum, Atlanta

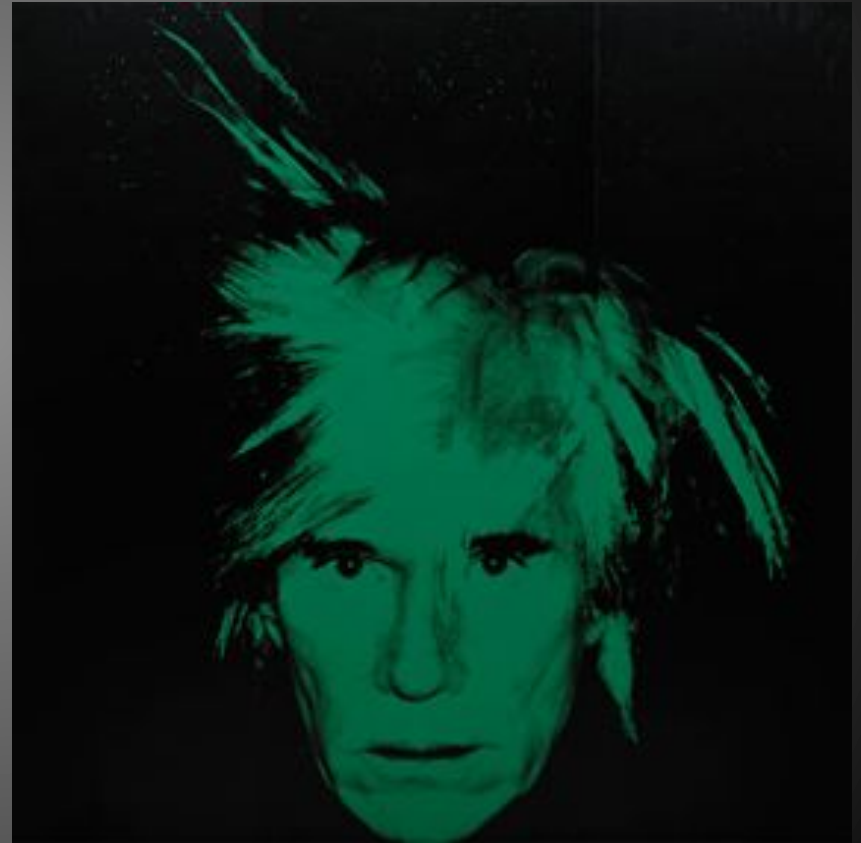


Self-Portrait.

**1966 Silkscreen ink on
synthetic polymer paint
on nine canvases**



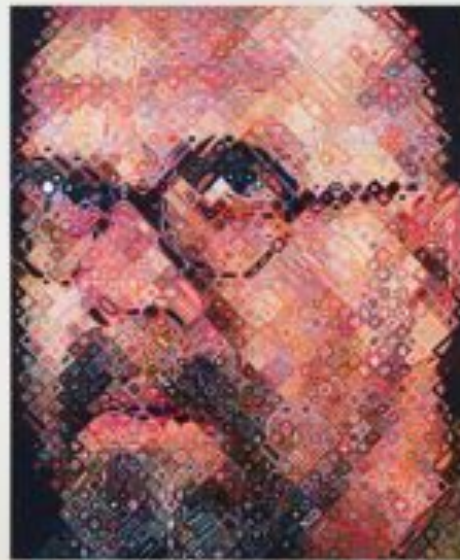
***Self-Portrait, 1986.* Silkscreen
ink on synthetic polymer paint
on canvas**



CHUCK CLOSE
SELF PORTRAITS 1967-2000



1967-68, acrylic



2000, silk screen



Chuck Close. *Frank*, 1969, acrylic on canvas,
Minneapolis Art Institute





Lucas, 1986-87 with details



Fanny/Fingerpainting,
1985, oil on canvas
National Gallery of Art, DC





Beverly McIver (American) 1962-
Reminiscing, 2005 NCMA



Mom Clapping. oil on canvas. 54" X 54"



Mourning Elizabeth #2, 2003, oil on canvas, 72" X 60"



Beverly McIver, Dancing for My Man, 2003, Oil on Canvas 47 7/8 x 35 7/8"



Beverly McIver, My Pretty Red Outfit, 1994 Oil on Canvas



Beverly McIver, Invisible Me, 1999, Oil on Canvas 36 x 36 in.







