

OLLI at Duke Fall 2020

Kris Door, lecturer

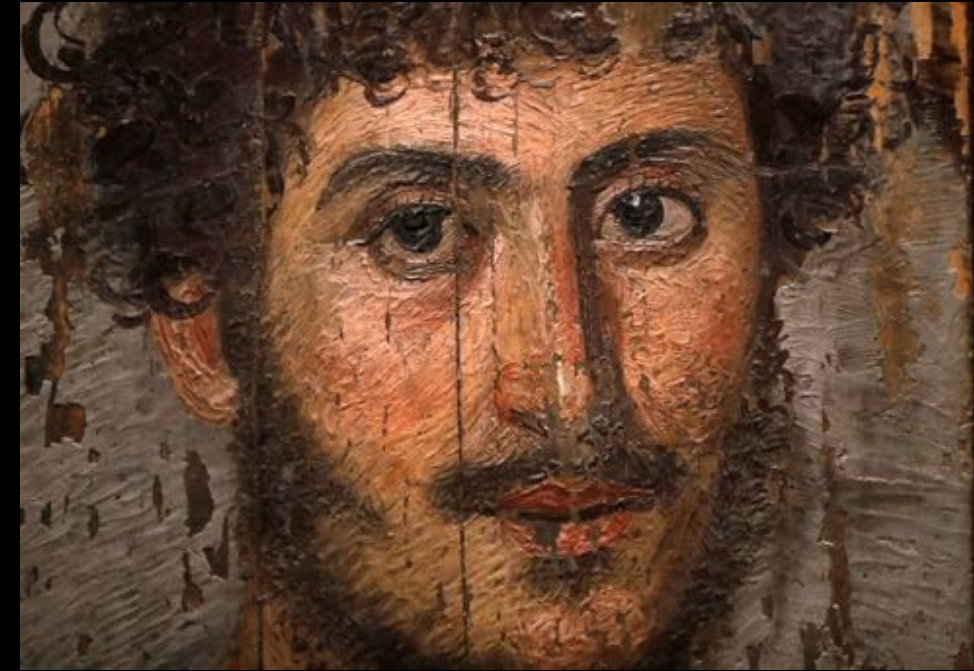
kristinedoor.com

Zoom Lectures:

Wednesdays, 11:00-12:15

Golden Mummies of Egypt; a blend of ancient cultures

November 11: Ancient Roman Art



Roman Empire



Roman Republic	509 BCE - 27 BCE
Early Empire	27 BCE - 96 CE
High Empire	96 BCE - 192 CE
Late Empire	192 CE - 337 CE

Capitoline Museum



*A Roman Patrician with Busts
of his Ancestors, c. 15 BCE, Marble,
life size, Capitoline Museum, Rome*



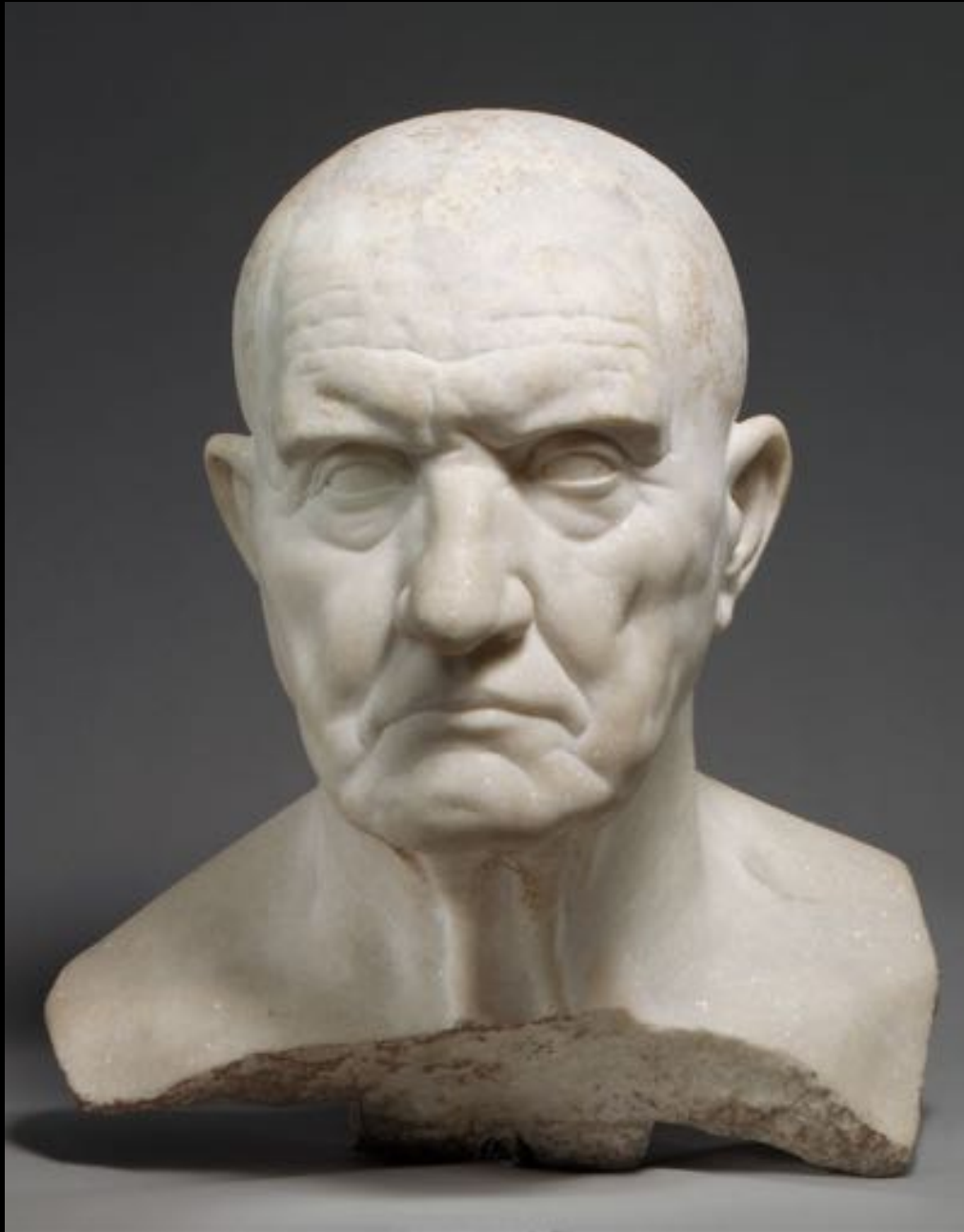
Veristic or verism

*Head of a Roman Patrician from Otricoli, c. 75-50 BCE,
Marble, Palazzo Torlonia, Rome*



Veristic or verism

Marble Bust of a Man, Mid-1st century BCE, Metropolitan Museum of Art



Funerary Monument for Sextus Maelius Stabilio, Vesinia Iucunda, and Sextus Maelius Faustus, 1st Century, Marble relief, NCMA





Appian Way

Funerary Monument for Sextus Maelius Stabilio, Vesinia Iucunda, and Sextus Maelius Faustus, 1st Century, Marble relief, NCMA



Ara Pacis Augustae (Altar of Augustus Peace), Rome, 13-9 BCE









Ara Pacis: processional frieze showing members of the Imperial household



Ara Pacis: processional
frieze showing members
of the Imperial household
13-9 BCE



Parthenon frieze
c. 443 and 437 BCE





Augustus of Prima Porta
1st century CE
Vatican Museum



Polykleitos, *Doryphoros* c. 450-40
BCE, Roman copy from Pompeii,
Archeological Museum, Naples



Augustus of Prima Porta
1st century
Vatican Museum



Torso of an Emperor in the Guise
of Jupiter, 1st century, Marble
NCMA



Celestial God or Hero
Late 2nd to early 3rd century
NCMA



Portrait of Marcus Aurelius
Late 2nd century CE marble,
NCMA

Louvre

Louvre



Equestrian Statue of Marcus Aurelius, c. 173-76 C.E. gilded bronze (Capitoline Museums, Rome). The original location of the sculpture is unknown. Beginning in the 8th century, it was located near the Lateran Palace, until it was placed in the center of the Piazza del Campidoglio in 1538 by Michelangelo.

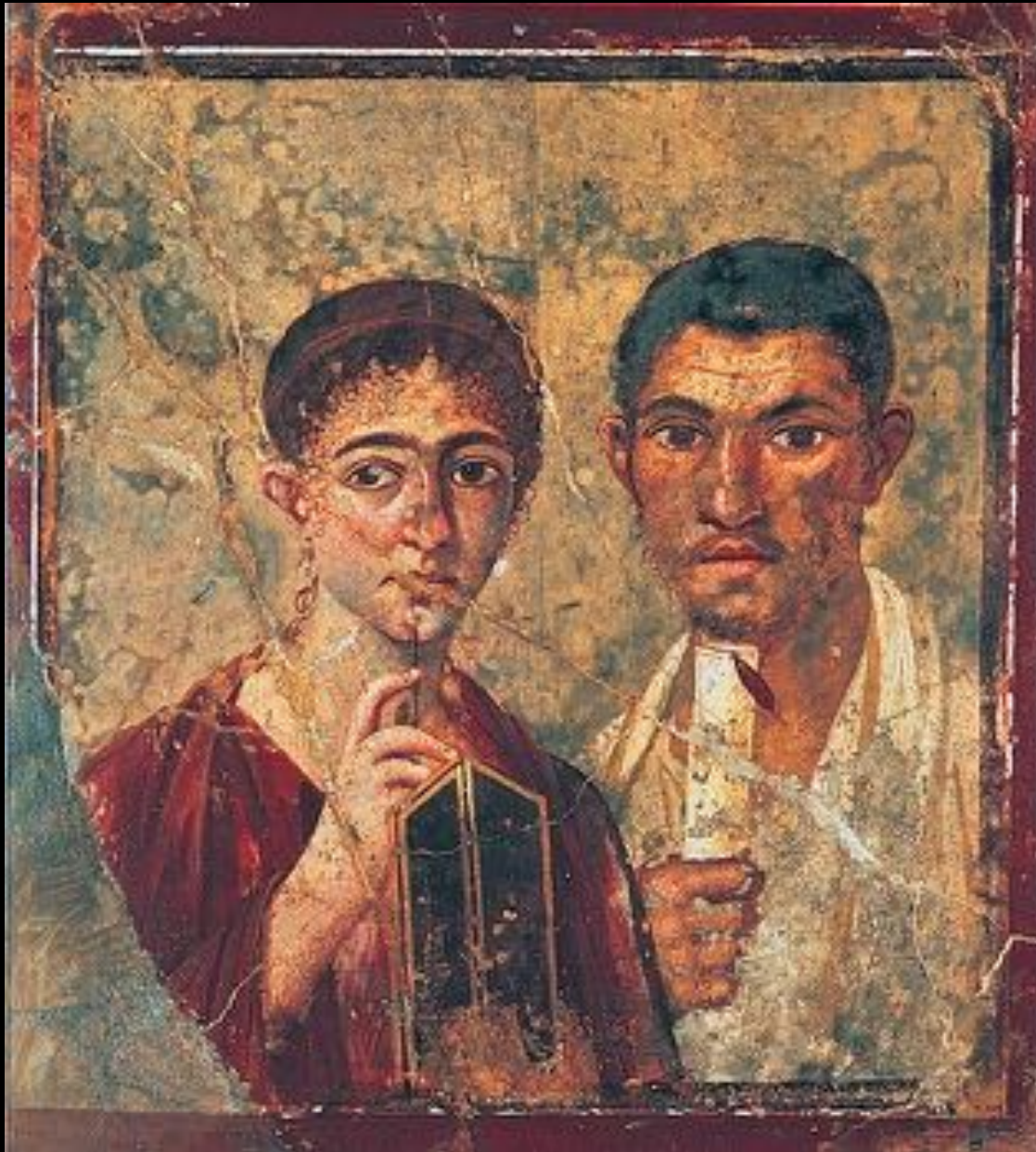


The original statue is now indoors for purposes of conservation.
Marcus Aurelius ruled ca. 161-180 C.E



Pompeii





Portrait of Husband and Wife,
Wall painting from Pompeii,
Late 1st century, National Archeological
Museum, Naples





Young Woman Writing, detail of a wall painting from Pompeii, Late 1st century, National Archeological Museum, Naples



A section of the garden fresco from the dining room from Livia's Villa, Rome, 1st century BCE. The fresco runs around all four walls and gives a 360° panorama of a luxuriant garden with birds and insects against a brilliant blue sky. (Palazzo Massimo, Rome)





atmospheric perspective





New Kingdom

Nobleman Hunting Birds, Tomb painting
from Thebes, Dynasty 18, 1400-1350
Fresco on dry plaster, British Museum



Roman Empire

Livia's dining room at Prima porta
30-20 BCE





Reconstruction of a cubiculum (bedroom) from the Villa of P. Fannius Synistor at Boscoreale, c. 40–30 BCE, Metropolitan Museum





Roman mosaic, 2nd Century, Marble and glass,
8ft 2in x 8ft 2in NCMA





Atrium in a Pompeii house

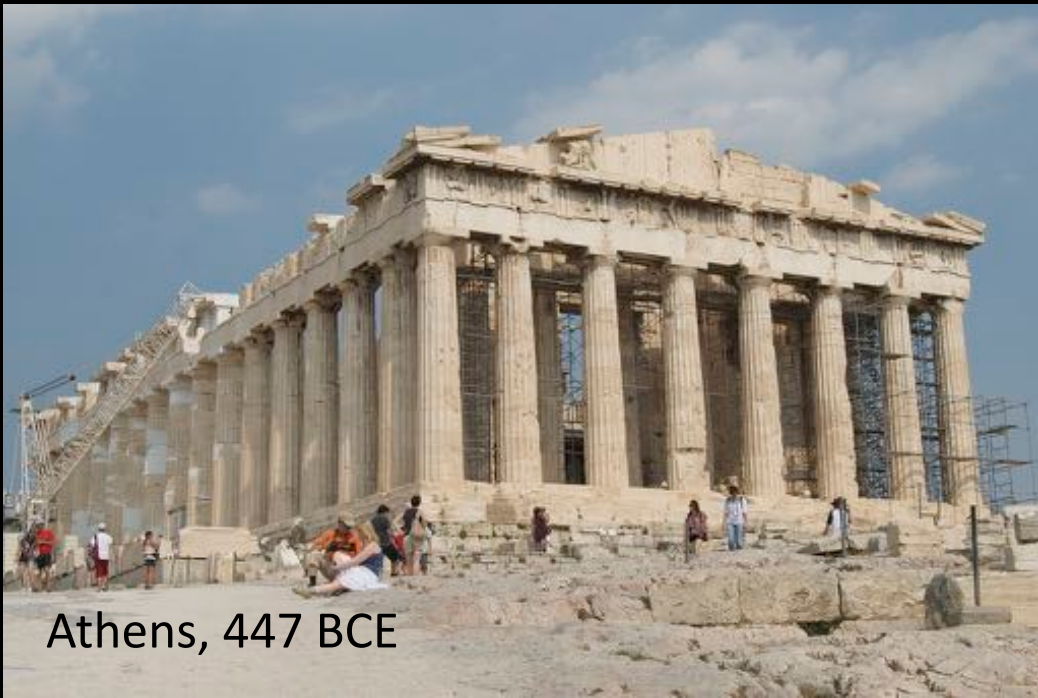






Temple of Fortuna Virilis,
Rome, 120-80 BCE





Athens, 447 BCE



Etruscan 600 B.C.

Rome, 120-80 BCE



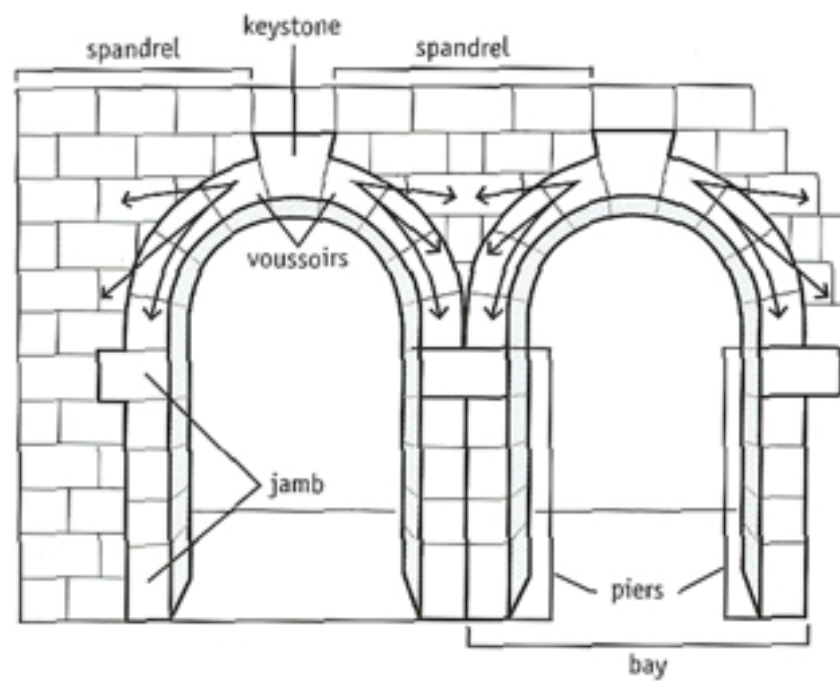
Second Bank of The United States, Philadelphia, PA 1824



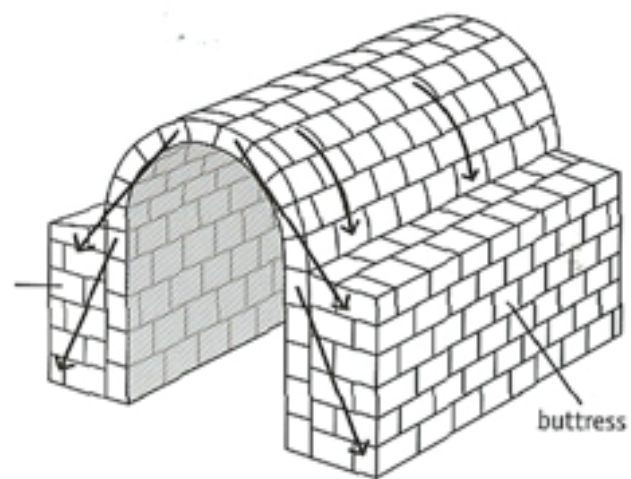


Reconstruction of **Roman Insula**
2nd century CE, Ostia, Italy.

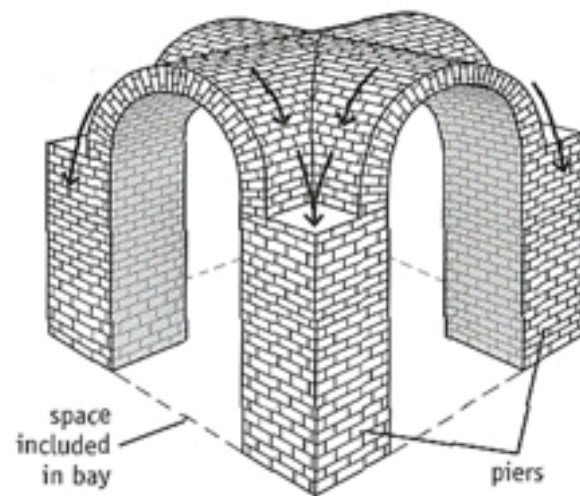




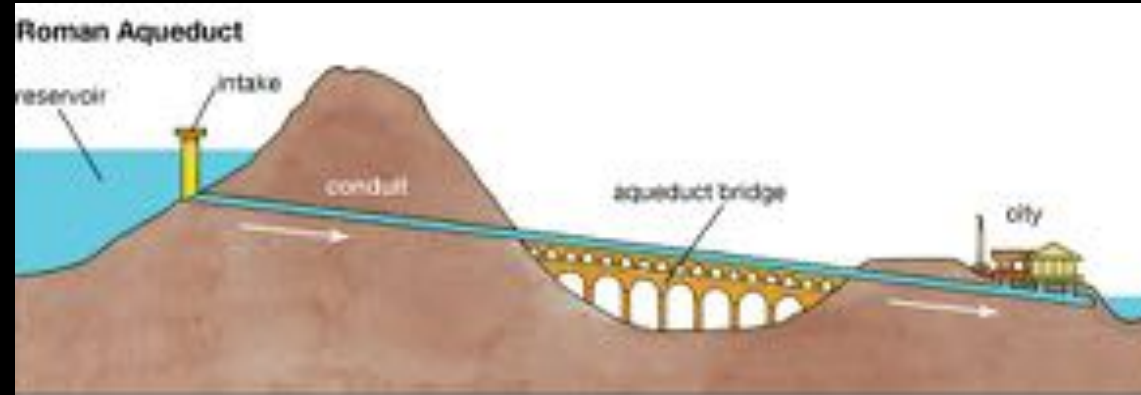
round arch



barrel vault



groin vault



Pont-du-Gard aqueduct, Nîmes, France, 1st century CE



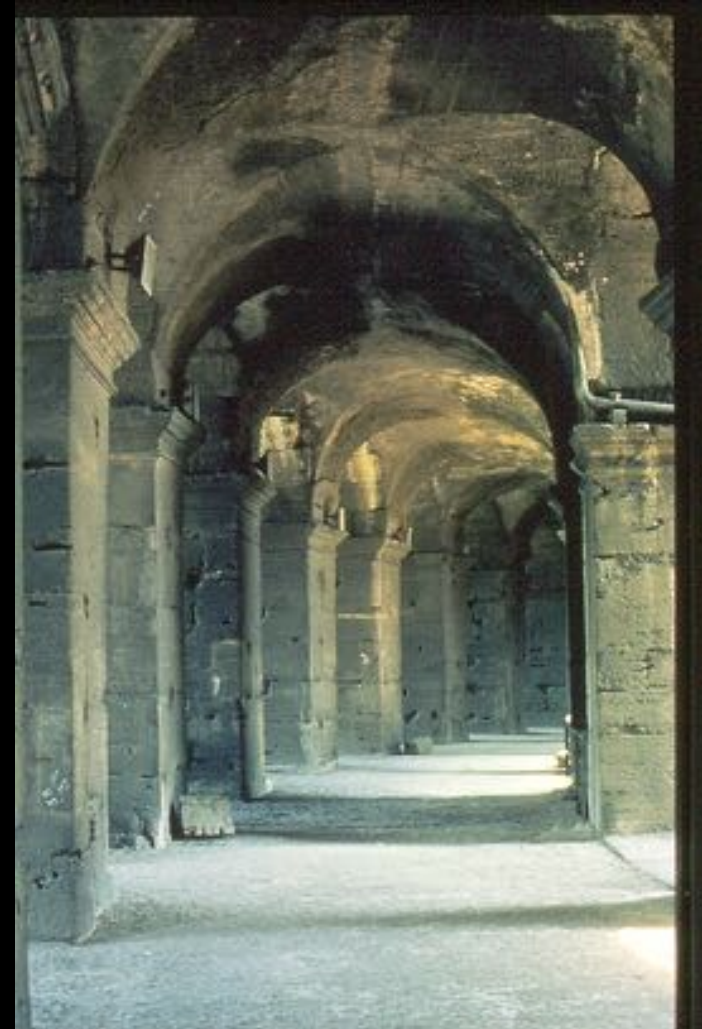
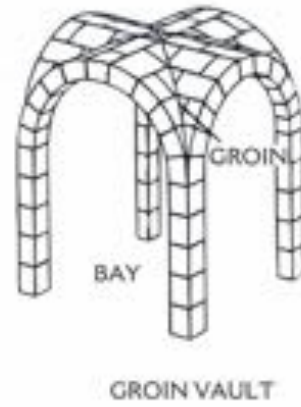
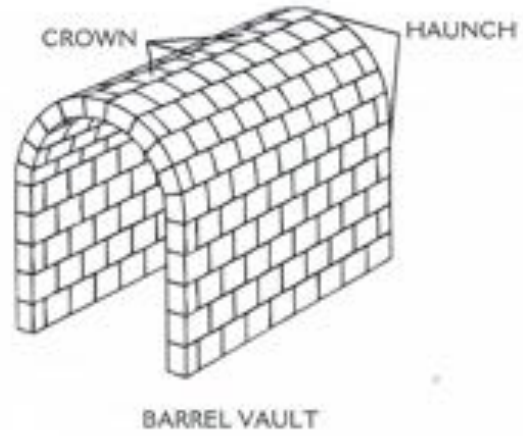
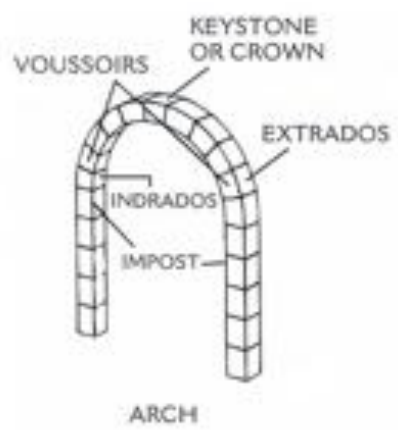


Aqueduct of Segovia,
Spain, 1st century CE

Roman Colosseum
72-80 CE





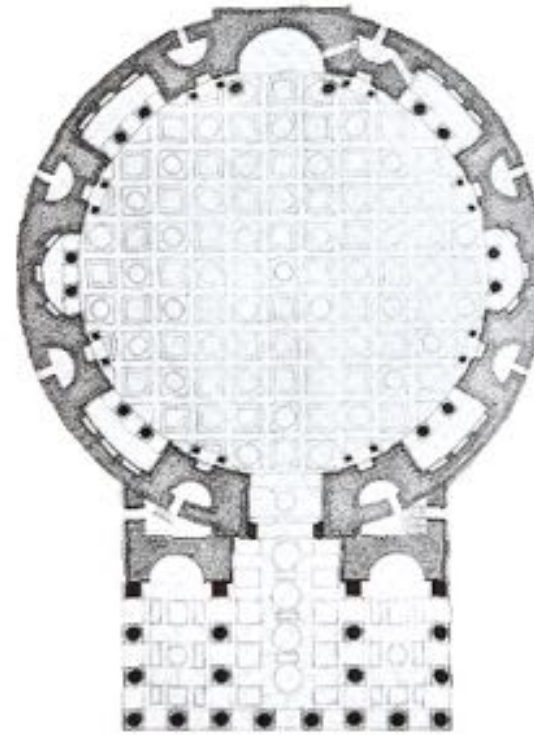
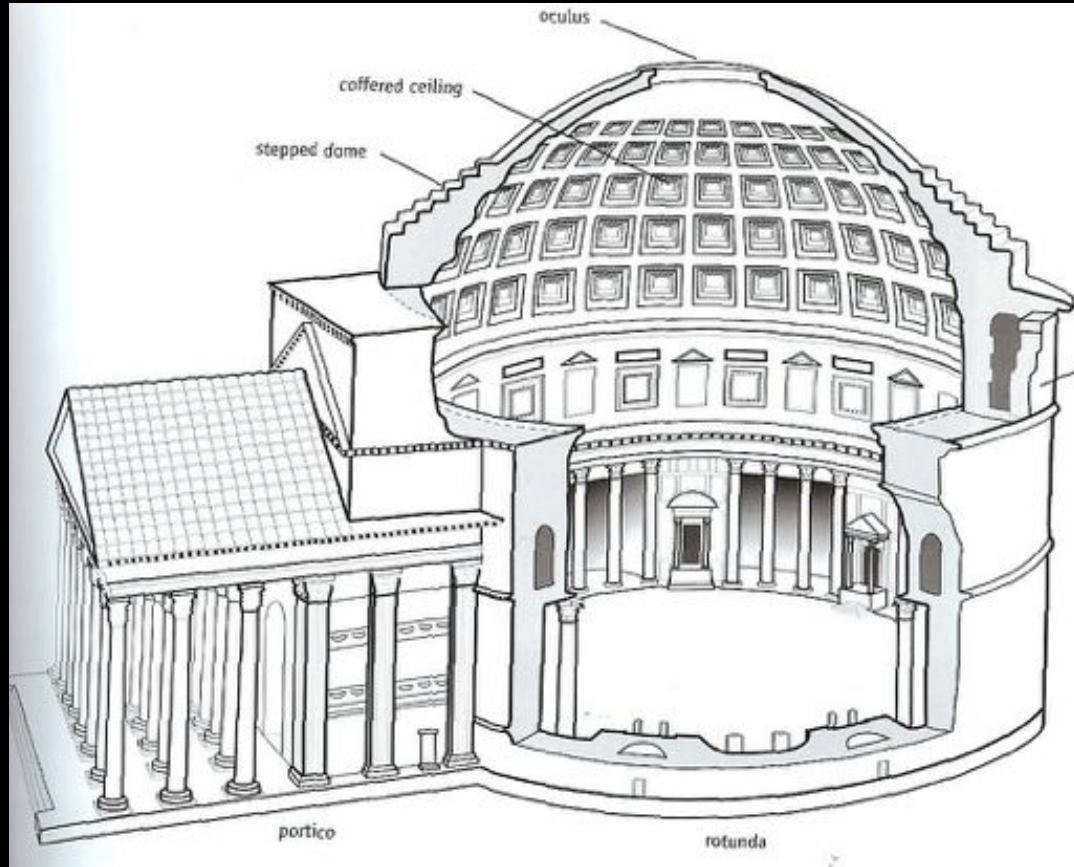




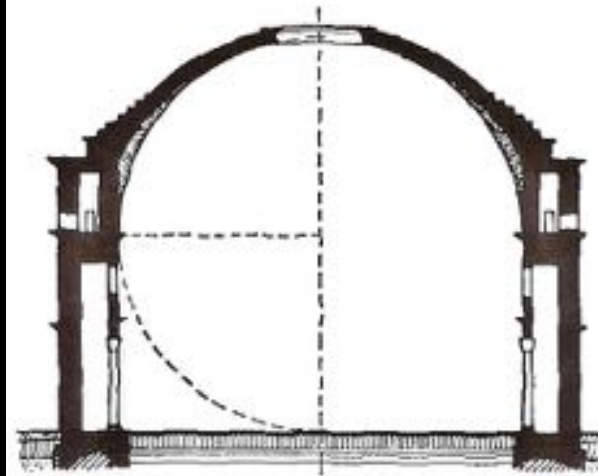
Pantheon, Rome, c. 118-125 CE
Aerial view / façade



The Pantheon, cut away, plan and section



251. Plan of the Pantheon









Andrea Palladio, Villa Rotunda,
1567-92, Vicenza, Italy



Thomas Jefferson, Monticello
1772, Charlottesville, VA



Thomas Jefferson designed the Rotunda at the University of Virginia in Charlottesville, 1817-26

The achievements of the Roman Emperors were honored in narrative reliefs on monumental altars, triumphal arches, and decorated columns





Arch of Titus (81 A.D.)





Column of Trajan (106-113 A.D.)

Tetrarchs, c. 305 carved from porphyry (purple marble) Corner of the facade of San Marco, Venice



Colossal body parts of Constantine, 313,
courtyard of Capitoline Museum, Rome





Christ as Sol Invictus,

detail of a vault mosaic in the
Mausoleum of the Julii, Rome, Italy,
late 3rd century

Funerary Stele of the Priest Dionysios and His Wife, Tertia
Roman, Phrygia, Asia Minor c. 240-260 NCMA



*Funerary Monument for Sextus Maelius
Stabilio, Vesinia Iucunda, and Sextus Maelius
Faustus, 1st Century BCE, Marble relief, NCMA*



Funerary Stela of the Priest
Dionysios and His Wife, Tertia
Roman, Phrygia, Asia Minor
c. 240-260 CE NCMA



Khnumti relief
Old Kingdom



Kritios Boy
Early Classical



Funerary Stele
Roman Republic



Funerary Stele
Roman Empire
Turkey



