

OLLI at Duke Fall 2021

Kris Door, PhD

website: kristinedoor.com

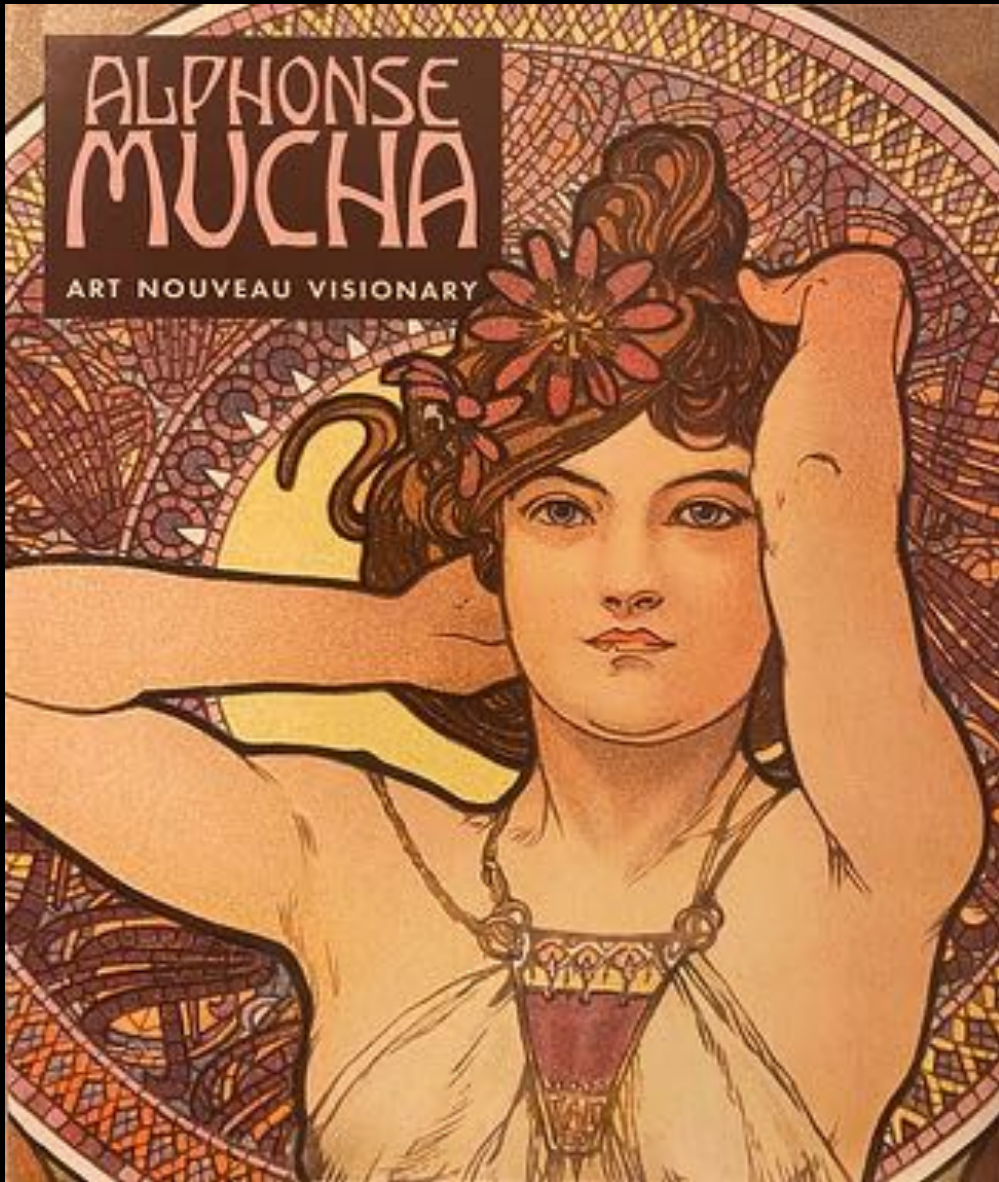
Zoom Lectures: Wednesdays, 11:00-12:15

Art Nouveau: 1890-1910

October 27: Alphonse Mucha & the Exhibition



2021 NCMA Exhibition Catalogue



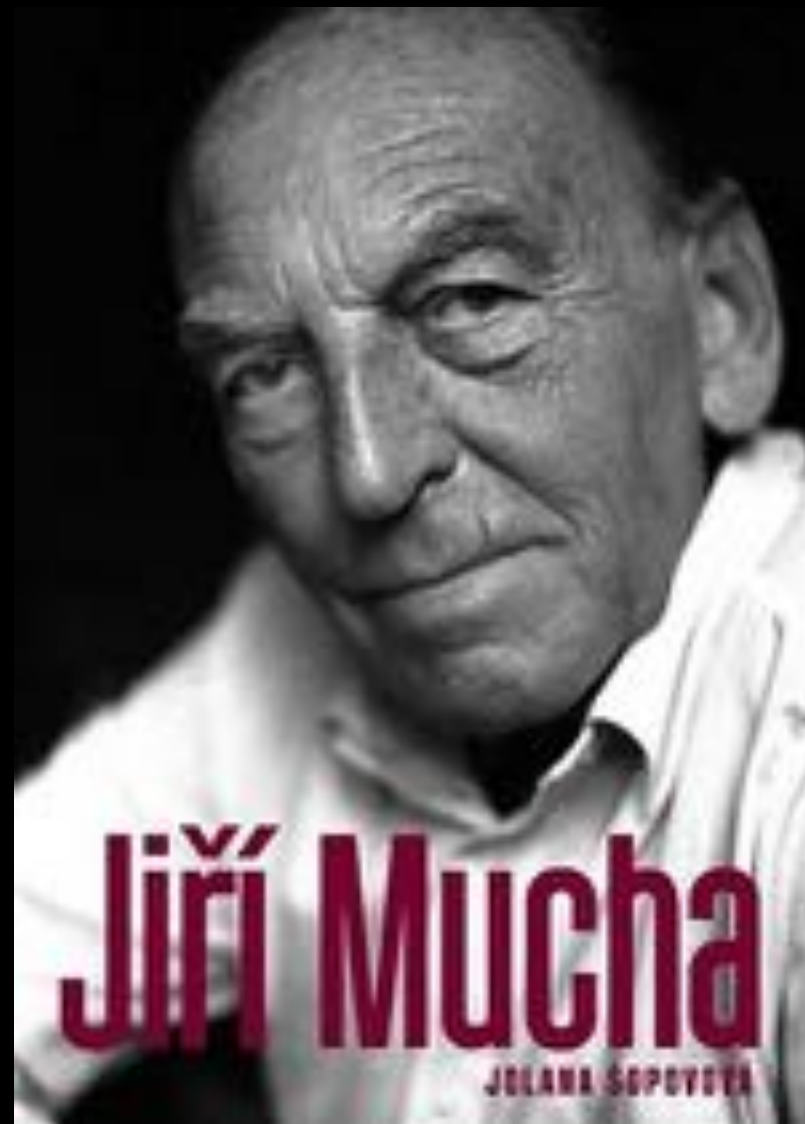
1999 NCMA Exhibition Catalogue



ALPHONSE MARIA
MUCHA



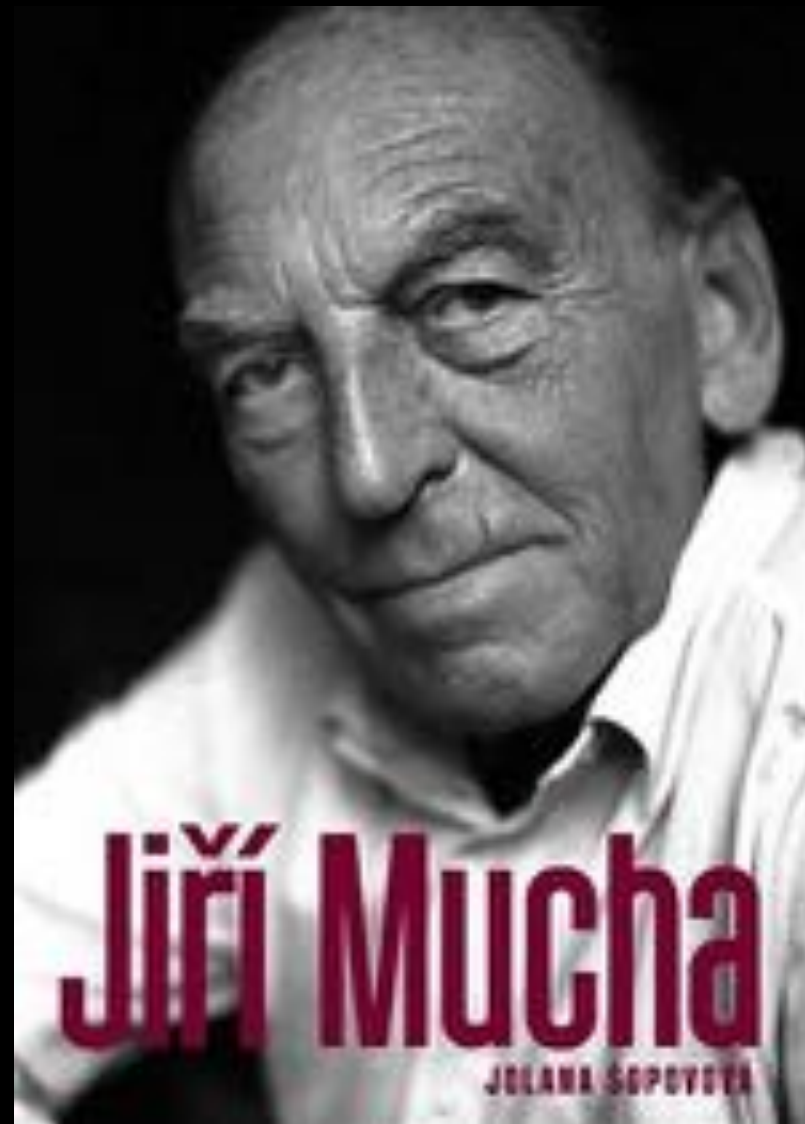
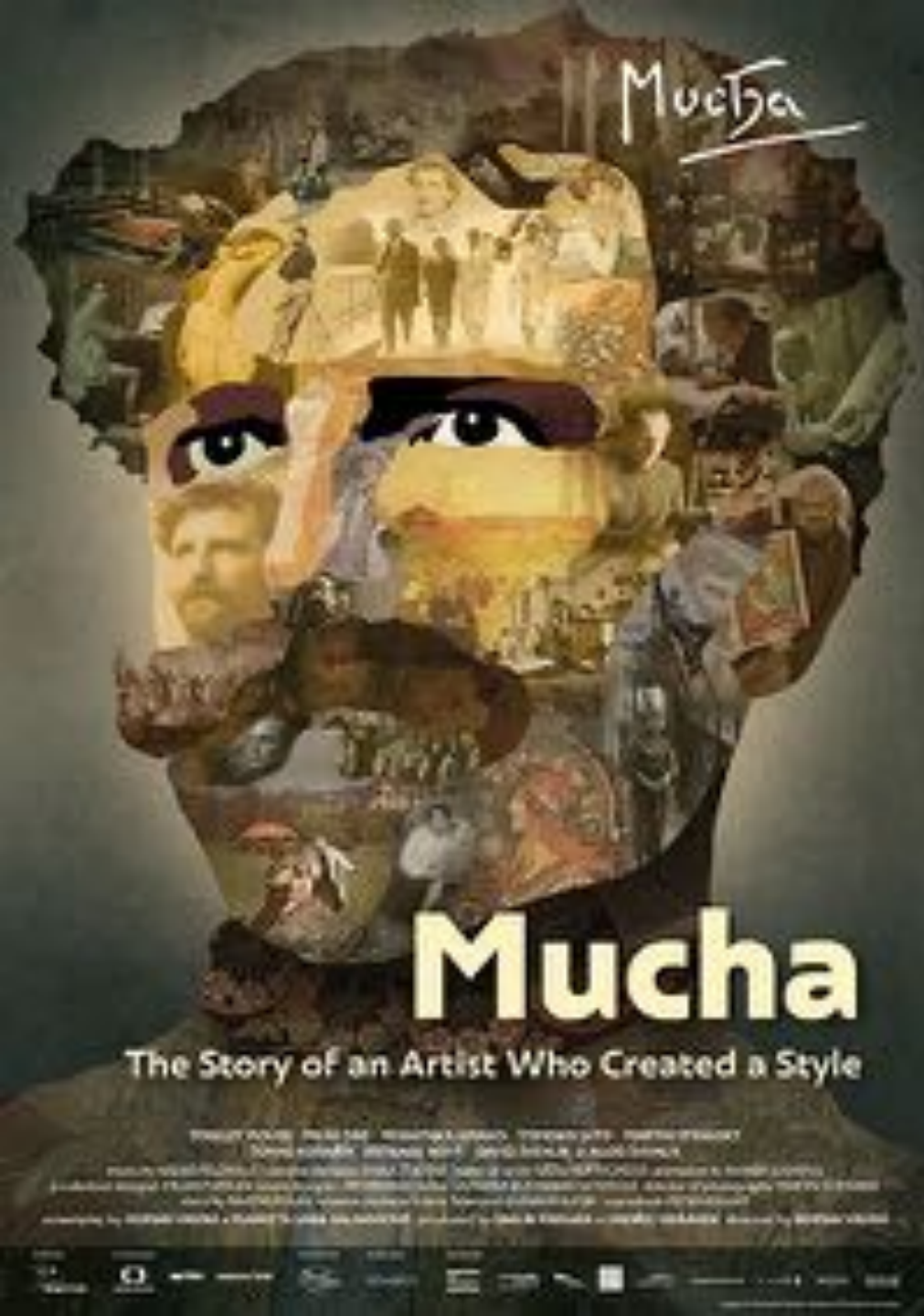
by Jiří Mucha



Jiří Mucha

JOLANA ŠOPEVOVÁ

Jirí Mucha
SON



Jiri Mucha, 1915-1991
SON



Geraldine Mucha with her son John

John Mucha, b. 1948
GRANDSON



A close-up, profile view of a woman with short, wavy, light-colored hair, smiling slightly. She is wearing a dark jacket over a light-colored top. The background is a warm, golden-brown color.

BRILLIANT
CLASSICS

Geraldine
MUCHA

CHAMBER MUSIC

Slamic Quartet
Prague Wind Quintet
Patricia Goodson piano
Vilém Veverka oboe
Jan Machat flute

1917-2012



John Mucha, b. 1948
GRANDSON

2005 by Sarah Mucha





Marcus Mucha, b. 1979
GREAT GRANDSON

Loans and Exhibitions

Current & Future Exhibitions

Past Exhibitions

Participations



CURRENT & FUTURE EXHIBITIONS

1 - 3 of 3 Exhibitions

You can also sign up to the Mucha Foundation newsletter to receive the latest news on Mucha exhibitions.

18 Dec
2021 05
Apr 2022

Mucha to Manga - The Magic of Line

Chiang Kai-shek Memorial Hall, Taipei

The Mucha Foundation is delighted to announce that Timeless Mucha: The Magic of Line will...



23 Oct
2021 23
Jan 2022

Alphonse Mucha: Art Nouveau Visionary

North Carolina Museum of Art, Raleigh, United States

Alphonse Mucha: Art Nouveau Visionary draws on the latest research to examine the theoretical aspects...



18 Jun
2021 19
Sep 2021

Alphonse Mucha: The Beauty of Art Nouveau

Musée départemental breton, Quimper, France

Despite the powerful impact of Mucha's style, the aesthetic and philosophical ideas behind its development...





ALPHONSE MUCHA: ART NOUVEAU VISIONARY

Czech-born Alphonse Mucha (1860–1939) was one of the most celebrated artists in Paris at the turn of the 20th century. As an influential force behind the art nouveau movement, he created sumptuous posters and advertising—promoting such everyday products as cigarette papers and tea biscuits—that transformed the streets of Paris into open-air art exhibitions. *Alphonse Mucha: Art Nouveau Visionary* celebrates the Mucha Trust collection's first major U.S. tour in 20 years, featuring a vast array of posters, illustrations, ornamental objects, and rarely seen sculpture, photography, and self-portraits. Additional works from the NCMA's collection highlight Mucha's influence in America and his close friendship

I.

WOMEN:
ICONS AND MUSES

IV.

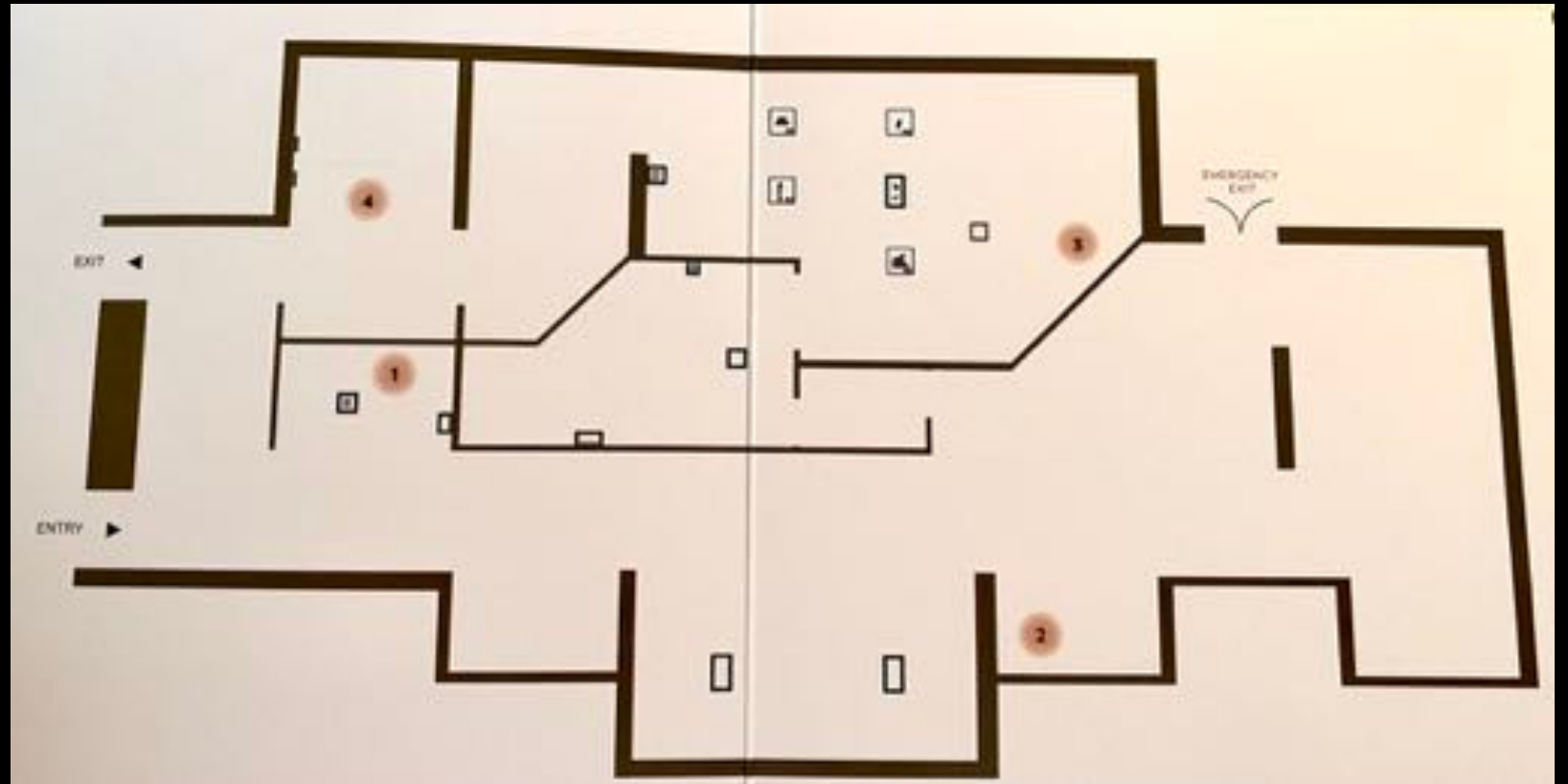
BEAUTY: THE POWER
OF INSPIRATION

II.

LE STYLE MUCHA
(THE MUCHA STYLE):
A LANGUAGE OF BEAUTY

III.

PARIS IN 1900:
THE WORLD AT
A CROSSROADS





R U S S I A N E M P I R E

GERMAN EMPIRE

AUSTRO- HUNGARIAN EMPIRE

North
Sea

Baltic
Sea

Black
Sea

LIVONIA
CURLAND

KOVNO

VITEBSK

VILNA

MOBILEV

WEST PRUSSIA

EAST PRUSSIA

GRODNO

MINSK

CONGRESS
POLAND

CHERNIGOV

SILESIA

BOHEMIA

GALICIA

VOLHYNIA

KIEV

POLTAVA

MORAVIA

PODLIA

EKATERINOSLAV

HUNGARY

KHERSON

CROATIA-
SLAVONIA

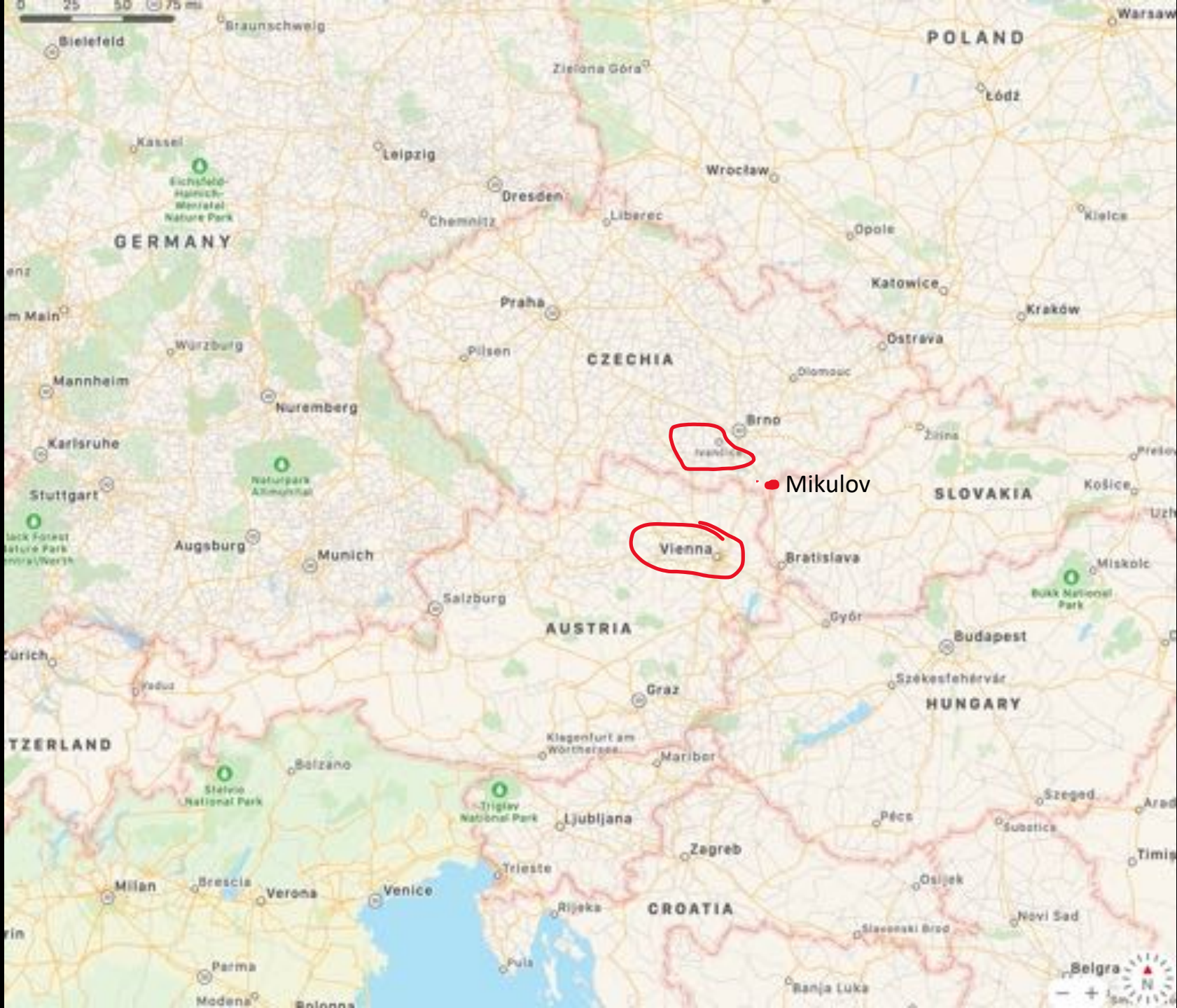
ROMANIA

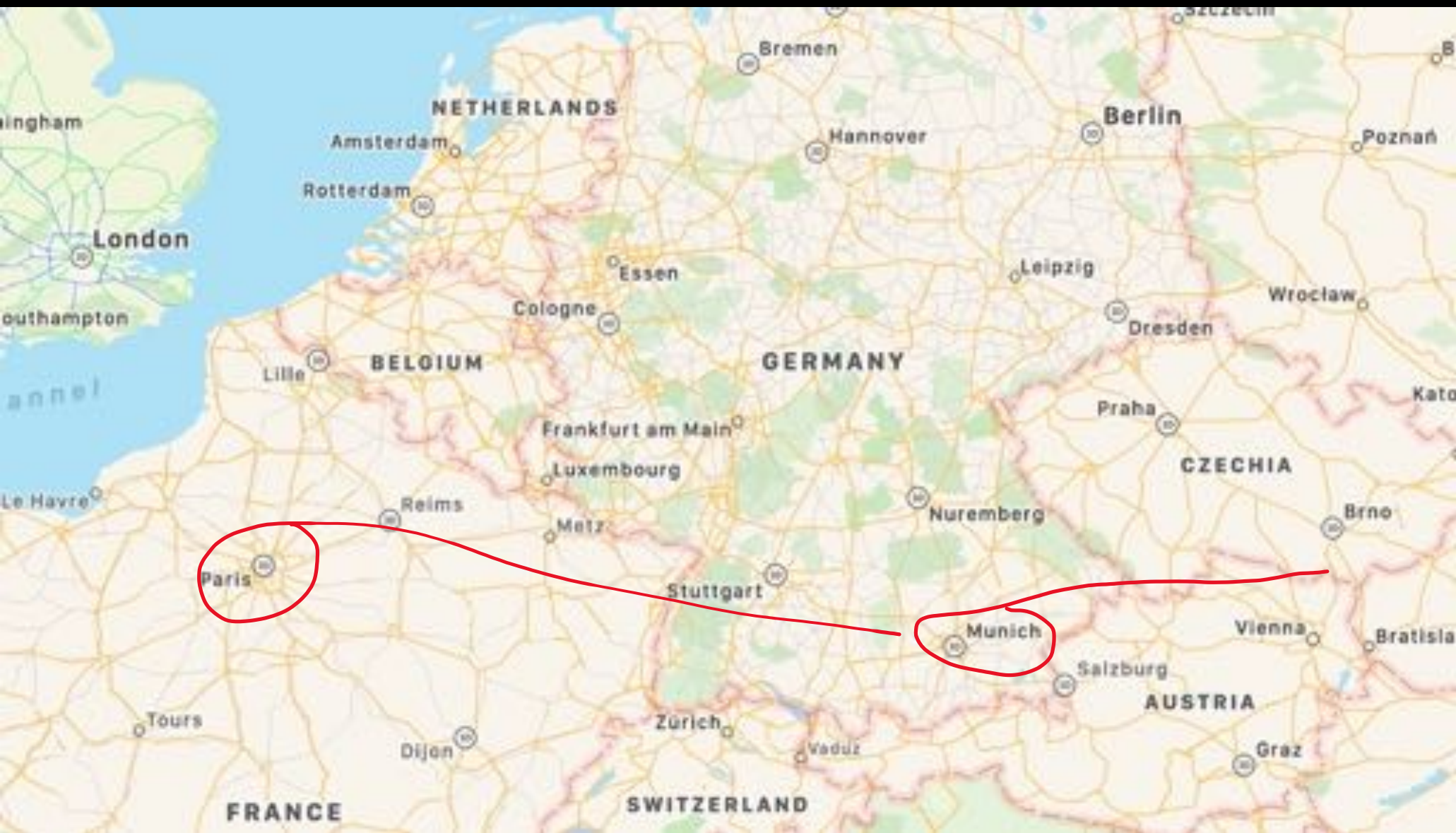
WOLDOVA

BESSARABIA

YAGORODA









Poster of Sarah Bernhardt
as *Gismonda* (1895)



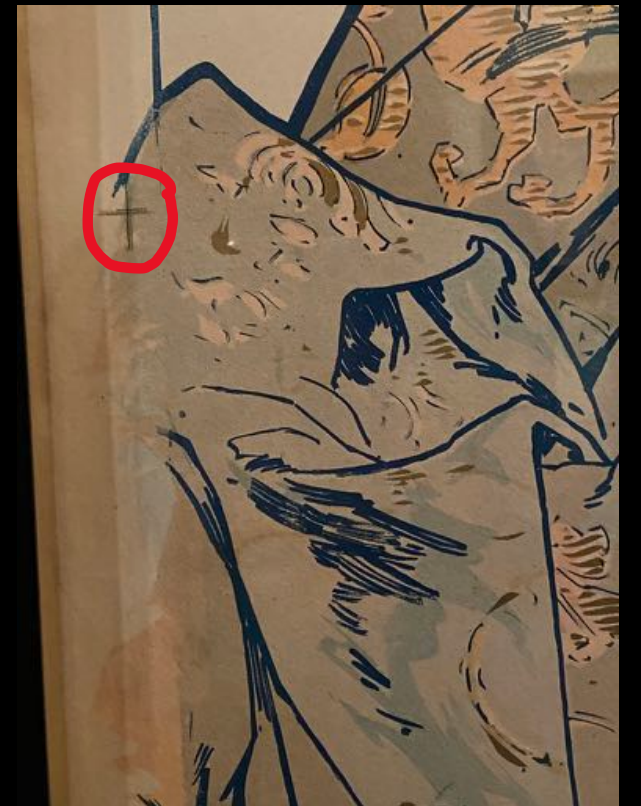
Sarah Bernhardt in her *Gismonda* costume,
photographed by Théobald Chartran (1896)



Mucha's 84 X 30"



Jules Chéret (French, 1836-1932)
"Pantomimes Lumineuses"
October 1892
Original lithograph
16 x 11 1/2"





Mucha's 84 X 30"

Jules Chéret





LA DAME
ROUX-CAMELIAS



THEATRE
DE
L'OPERA



OPERA
HALLS



1896



1897



1897



1898





THEATRE DE LA RENAISSANCE

SARAH-BERTHIER

LA SAMARITAINE

EVANGILE EN TROIS TABLEAUX EN VERS
DE M^{RE} EDMOND ROSTAND
MUSIQUE DE M^{RE} GABRIEL PIERRE



LA SAMARITAINE

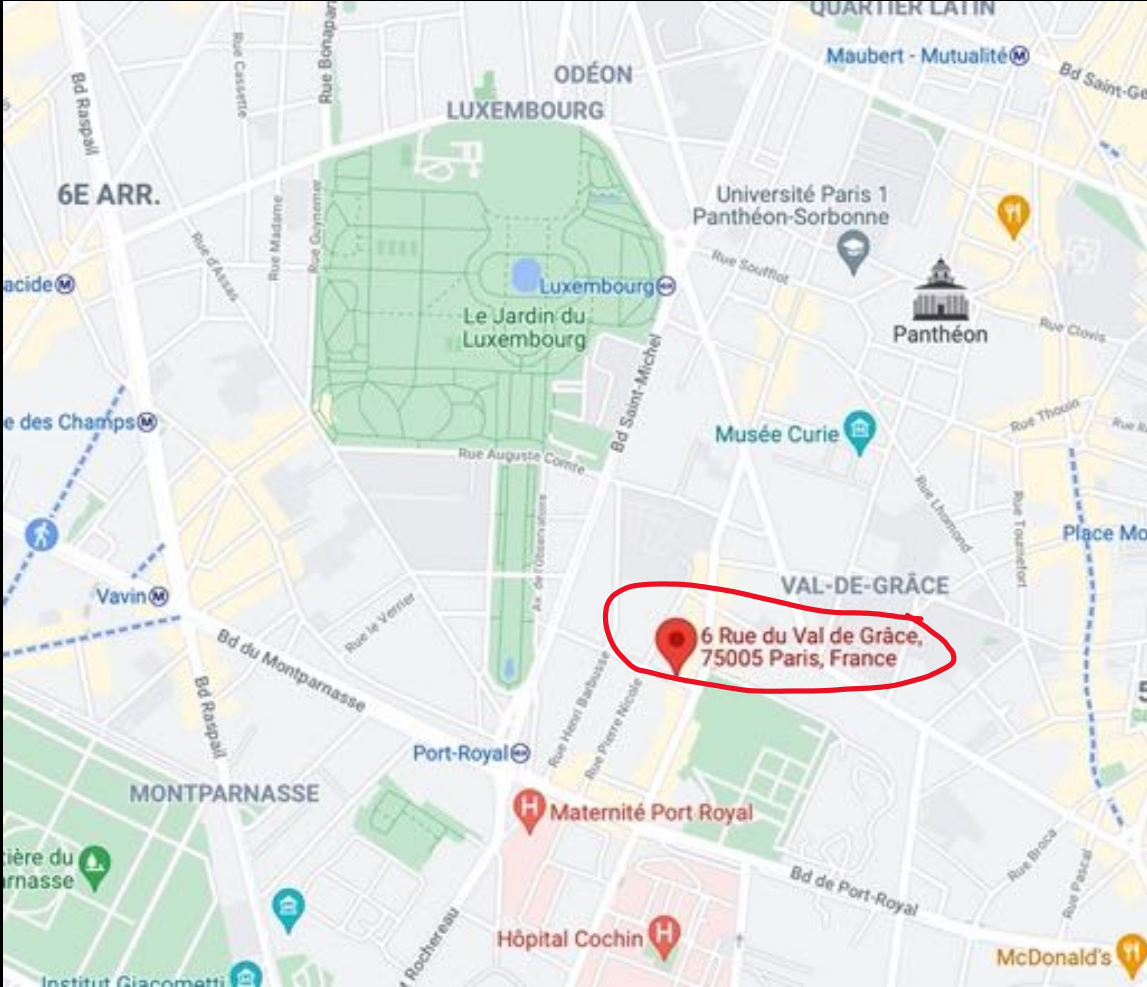
EVANGILE EN TROIS TABLEAUX EN VERS
DE M^{RE} EDMOND ROSTAND



Paul Gauguin, Alphonse Mucha, Luděk Marold, and Annah the Javanese



6 Rue du Val de Grâce





Google





RÉVERIE DU SOIR



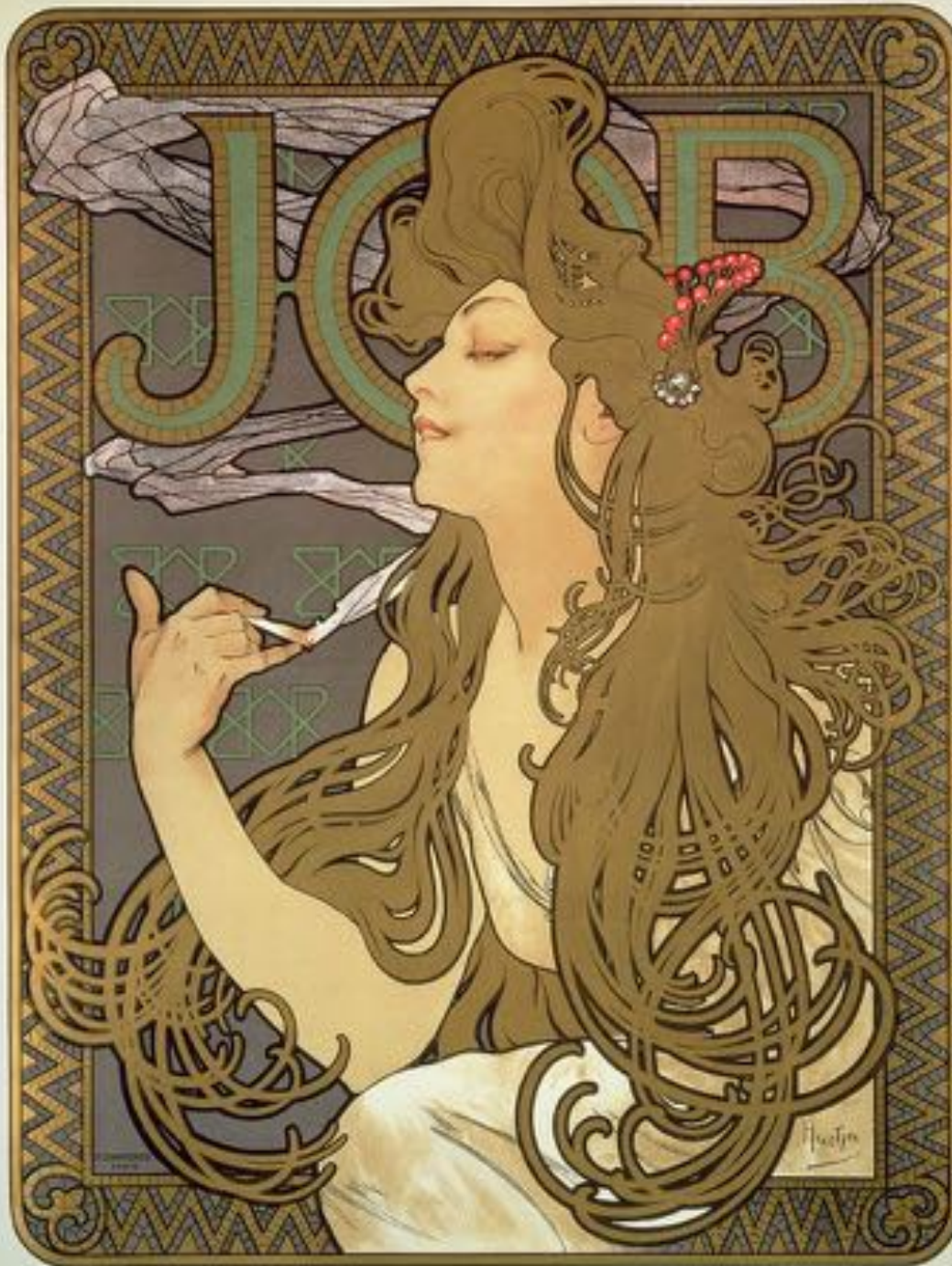
The Times of the Day:
Evening Contemplation (1899)



Precious Stones, *Emerald*, 1900



Princess Hyacinth
1911



Job (rolling papers), 1896,
Lithograph poster,

Moët & Chandon:
Champagne White Star, 1899

Biscuits Lefevre Utile, 1896



Cycles Perfecta, 1902





The Seasons, 1897



Times of the Day, 1899



Precious Stones, 1902,



J. G. Thompson



J. G. Thompson



J. G. Thompson



J. G. Thompson



A. MUCHA 1905



Salon des Cent, April 1896



Salon des Cent exhibition of June 1897

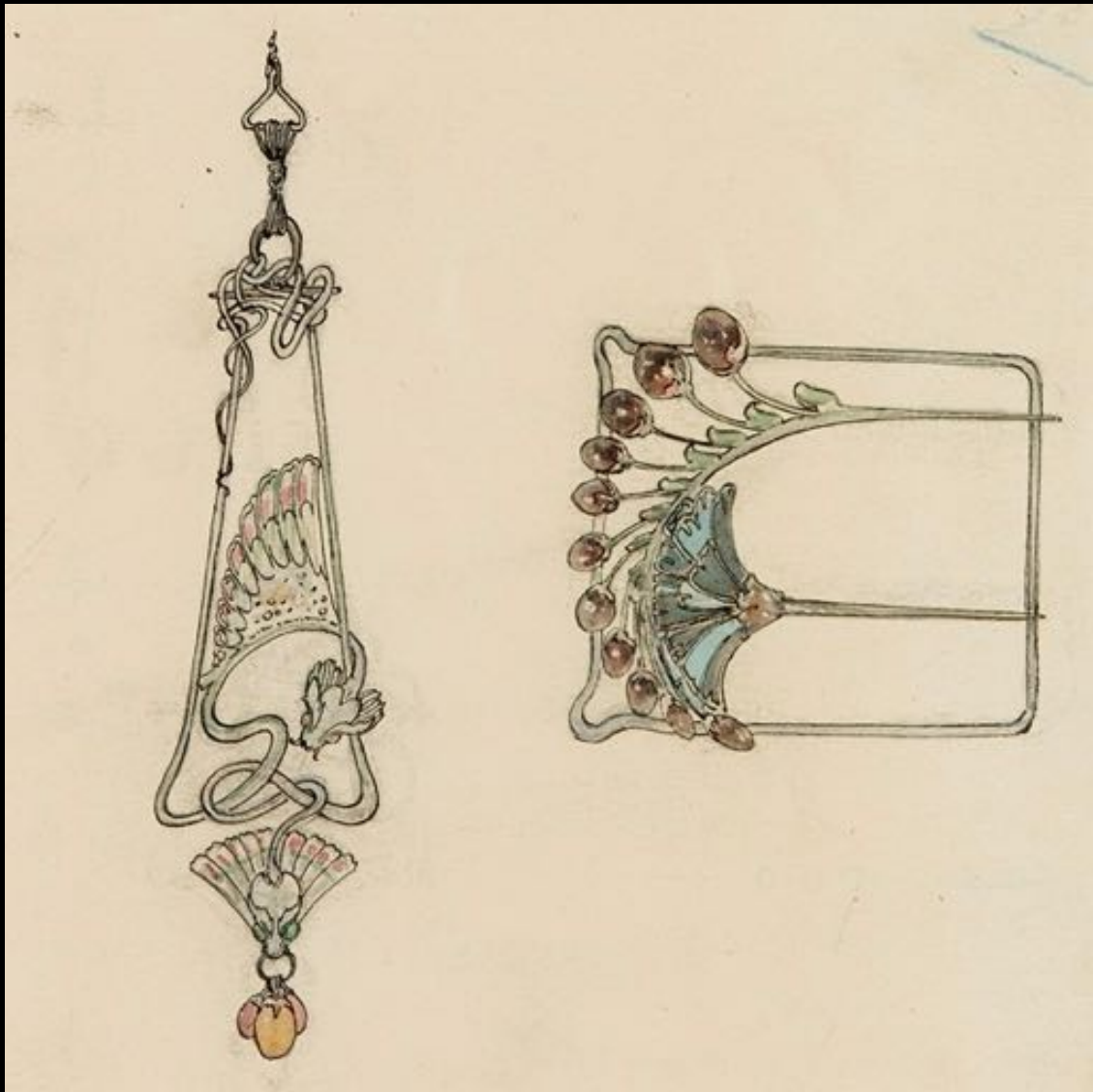


Alphonse Mucha, "Ornamental Chain and Pendant designed by Mucha and made by Georges Fouquet" 1900, gold, enamel, water pearl, mother-of-pearl and semi-precious stones

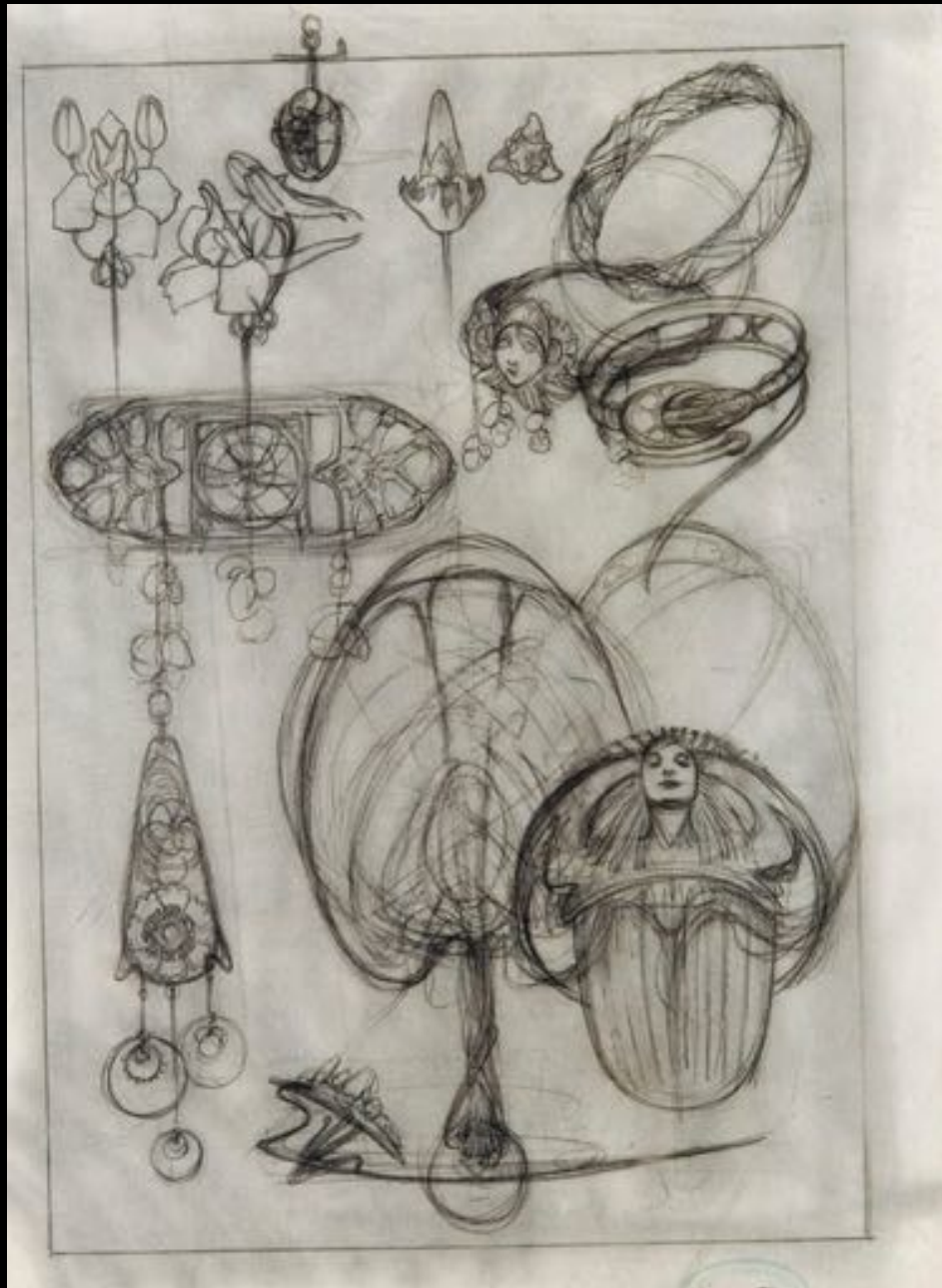


Medea' bracelet. 1899.
Cloisonne enamel, rubies, opals and diamonds





Drawings by Alphonse Mucha, 1900.
National Museum, Prague

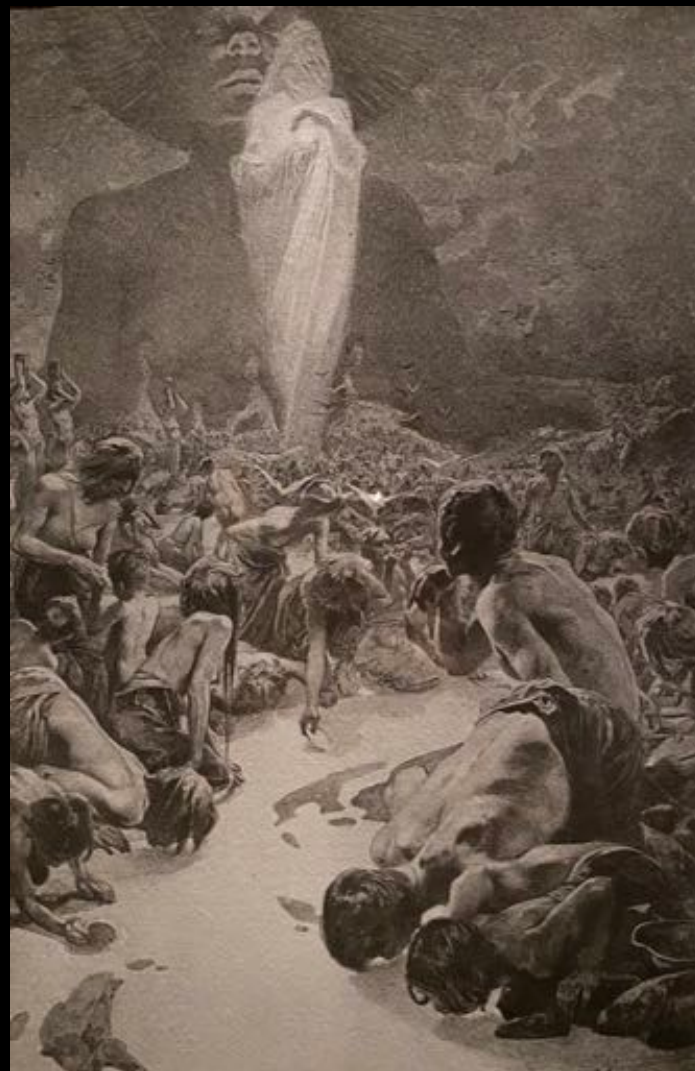
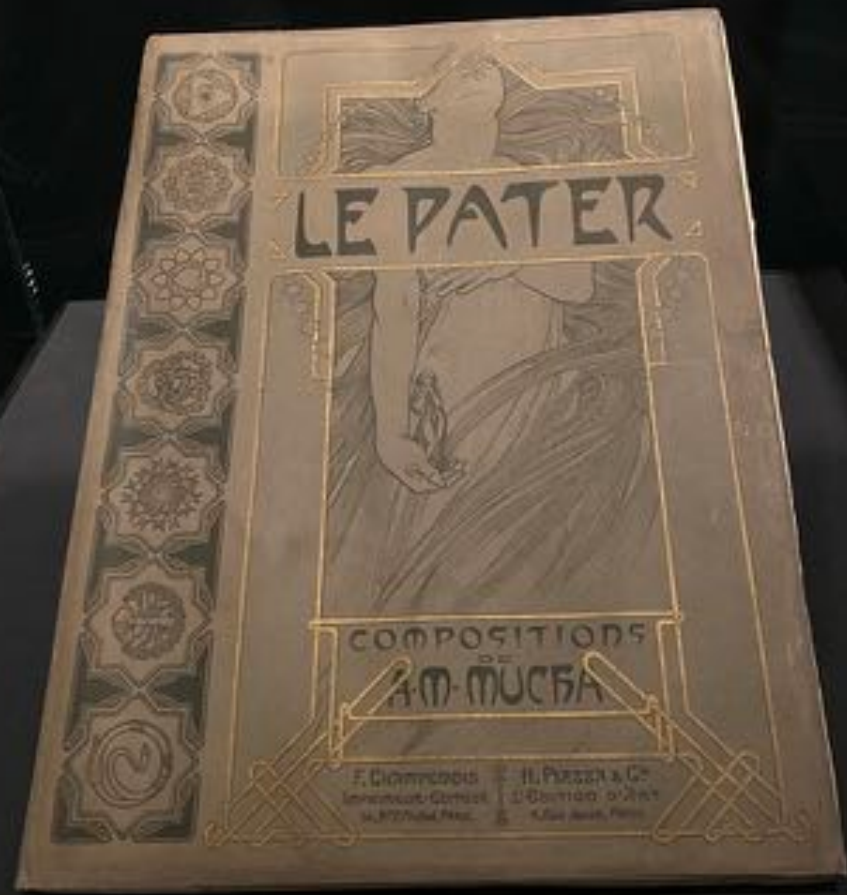


A re-creation of the interior of the Georges Fouquet's Jewelry store is on display at the Carnavalet Museum in Paris





The Lord's Prayer (Le Pater), 1899 (510 numbered copies)



Give us Today our Daily Bread



And Lead us Not into Temptation

Bosnian Pavilion murals





Bosnian Pavilion murals and restaurant menu



Auguste Rodin during Slovakia trip in 1902. Auguste Rodin and Alfonse Mucha are walking in the front of a group of artists.
Museum of Czech Literature, Prague.



Auguste Rodin, Damned Women, 1911



Alphons Mucha,
Nude on a Rock,
1899

Marie Chytilová in Mucha's studio
in rue du Val-de-Grâce, Paris. 1903



New York Daily News poster, 1904, lithograph



Reproduction of the front and back covers of the Art Supplement of the New York Daily News, April 3, 1904, from AMM:HLA, 201.





Marie and Alphonse Mucha on their wedding day in 1906



Alphonse Mucha in New York, 1908

Portrait of Milada Cerny,
1906, oil on canvas, Private Collection



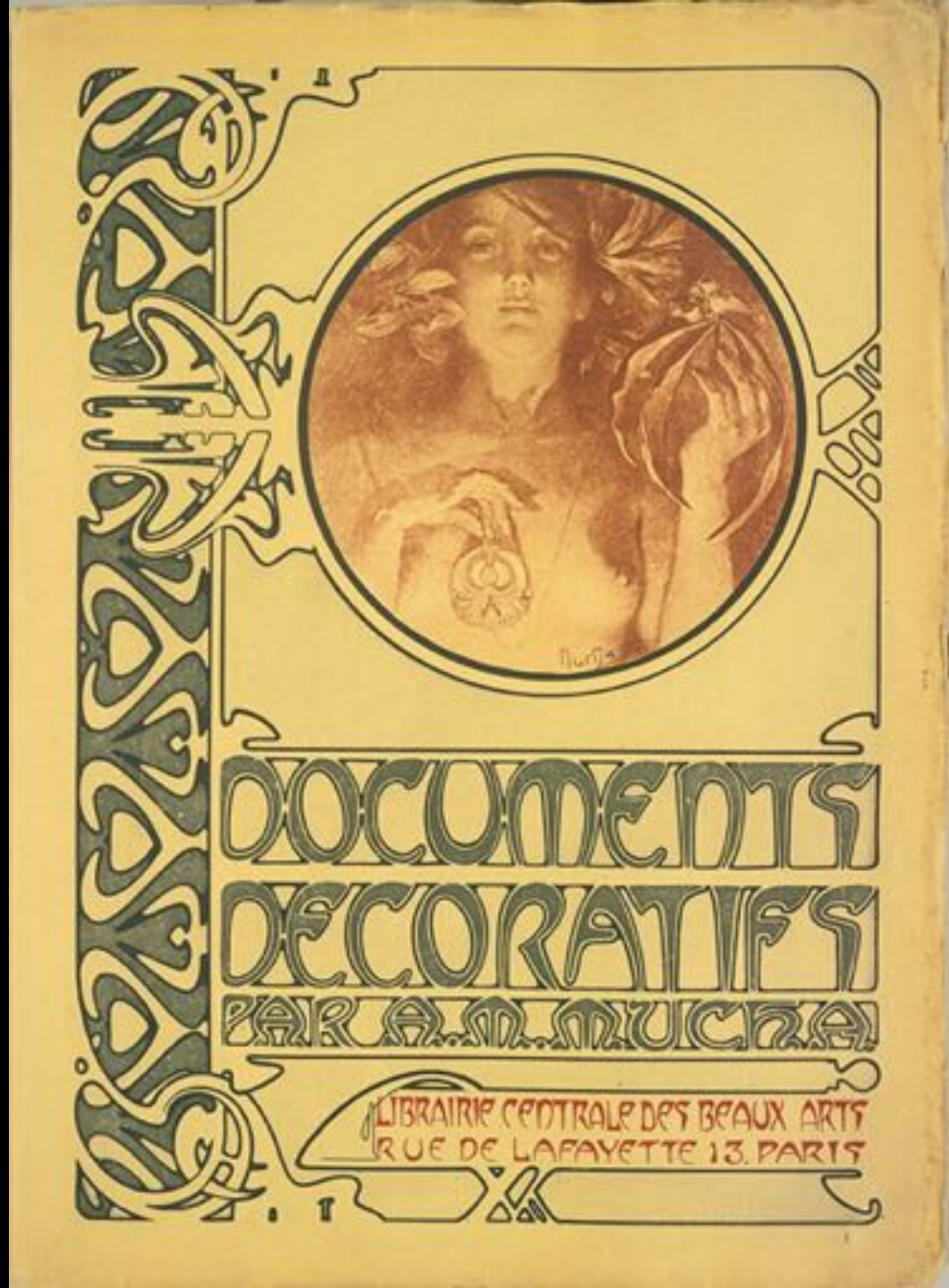
Portrait of Josephine Crane-Bradley as Slavia,
1908, Oil and Tempera National Gallery Prague

Portrait of Milada Cerny,
1906, oil on canvas, Private Collection



John Singer Sargent, *Lady Agnew*, 1893
National Gallery of Scotland





Documents Decoratif, published, 1902



Documents Décoratifs



Plate 17



Plate 18



Plate 23

Documents Décoratifs



Plate 40



Plate 54



Plate 65

Documents Décoratifs



Plate 73

Charles Richard Crane
(August 7, 1858 – February 15, 1939)



Portrait of Josephine Crane-Bradley as Slavia,
1908, Oil and Tempera National Gallery Prague





Alfonse and Marie had their daughter, Jaroslava (1909—1986), in New York



In 1915, in Prague, the Muchas had their second child, their son Jiří (1915—1991).



Zbiroh Castle



Alphonse Mucha working on the cycle in 1920.





The Slav Epic' cycle No.2: *The Celebration of Svantovít* , 1912,
Egg tempera and oil on canvas





Mucha's *The Slav Epic* in the National Gallery of Prague



Mucha's *The Slav Epic* in the National Gallery of Prague



After the Battle of Grunwald, the Solidarity of the Northern Slavs, 1924

Egg tempera and oil on canvas



Gino Severini, *Armored Train in Action*,
1915, MoMA



Otto Dix, *The Trench*, 1923, Graphic depiction of WWI
deemed degenerate by Nazis and summarily burned





Pablo Picasso, *Guernica*, 1937, Oil on canvas, Madrid

Eugène Delacroix (French, 1798-1863), *Death of Sardanapalus*, 1827-28,
Oil on canvas , Louvre





Adolf Hitler at Prague Castle





Self-portrait with posters for Sarah Bernhardt, in his studio, Rue du Val de Grâce, Paris (c.1901)

